

Product datasheet for PH305977

MOBKL2B (MOB3B) (NM_024761) Human Mass Spec Standard

Product data:

Product Type:	Mass Spec Standards
Description:	MOBKL2B MS Standard C13 and N15-labeled recombinant protein (NP_079037)
Species:	Human
Expression Host:	HEK293
Expression cDNA Clone or AA Sequence:	RC205977
Predicted MW:	25.5 kDa
Protein Sequence:	>RC205977 protein sequence Red=Cloning site Green=Tags(s) MSIALKQVFNKDKTFRPKRKFEPGTQRFELHKRAQASLNSGVDLKAAVQLPSGEDQNDWVAVHVVDFFNR INLIYGTICEFCTERTCPVMSGGPKYEYRWQDDLKYYKPTALPAPQYMNLLMDWIEVQINNEEIFPTCVG VPFPKNFLQICMKILCRLFRVHVYIHHFDRVIVMGAEAHVNTCYKHFYFVTEMNLIDRKELEPLKEM TSRMCH TRTRPLEQKLI SEEDLAANDILDYKDDDDKV
Tag:	C-Myc/DDK
Purity:	> 80% as determined by SDS-PAGE and Coomassie blue staining
Concentration:	>0.05 µg/µL as determined by microplate BCA method
Labeling Method:	Labeled with [U- ¹³ C ₆ , ¹⁵ N ₄]-L-Arginine and [U- ¹³ C ₆ , ¹⁵ N ₂]-L-Lysine
Buffer:	25 mM Tris-HCl, 100 mM glycine, pH 7.3
Storage:	Store at -80°C. Avoid repeated freeze-thaw cycles.
Stability:	Stable for 3 months from receipt of products under proper storage and handling conditions.
RefSeq:	NP_079037
RefSeq Size:	6528
RefSeq ORF:	648
Synonyms:	C9orf35; MOB1D; MOBKL2B
Locus ID:	79817
UniProt ID:	Q86TA1

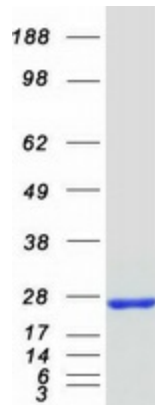


[View online »](#)

Cytogenetics: 9p21.2

Summary: The protein encoded by this gene shares similarity with the yeast Mob1 protein. Yeast Mob1 binds Mps1p, a protein kinase essential for spindle pole body duplication and mitotic checkpoint regulation. This gene is located on the opposite strand as the interferon kappa precursor (IFNK) gene. [provided by RefSeq, Jul 2008]

Product images:



Coomassie blue staining of purified MOB3B protein (Cat# [TP305977]). The protein was produced from HEK293T cells transfected with MOB3B cDNA clone (Cat# [RC205977]) using MegaTran 2.0 (Cat# [TT210002]).