

Product datasheet for PH305976

PIP4K2C (NM_024779) Human Mass Spec Standard

Product data:

Product Type:	Mass Spec Standards
Description:	PIP4K2C MS Standard C13 and N15-labeled recombinant protein (NP_079055)
Species:	Human
Expression Host:	HEK293
Expression cDNA Clone or AA Sequence:	RC205976
Predicted MW:	47.3 kDa
Protein Sequence:	>RC205976 protein sequence Red=Cloning site Green=Tags(s)

MASSSVPPATVSAATAGPGPGFGFASKTKKKHFVQQKVKVFRAADPLVGVFLWGVVHINELSQVPPVPM
LLPDDFKASSKIKVNNHLFHRENLP SHFKFKEYCPQVFRNLRDRFGIDDQDYLVS LTRNPPSESEGS DGR
FLISYDRTLVIKEVSSEDIADMHSNLSNYHQYIVKCHGNTLLPQFLGMYRVSVDNEDSYMLVMRNMF SHR
LPVHRKYDLKGSLSREASDKEKVKELPTLRDMDFLNKNQKQVYIGEEKIFLEKLRDVEFLVQLKIMD
YLLLLGIHDIIRGSEPEEEAPVREDESEVDGDCSLTGPPALVGSYGT SPEGIGGYIHSRPLGPGEFESF
IDVYAIRSAEGAPQKEVYFMGLIDILTQYDAKKKAAHAAKTVKHGAGAEISTVHPEQYAKRFLDFITNIF
A

TRTRPLEQKLI SEEDLAANDILDYKDDDDKV

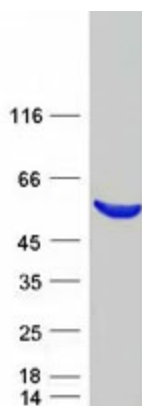
Tag:	C-Myc/DDK
Purity:	> 80% as determined by SDS-PAGE and Coomassie blue staining
Concentration:	>0.05 µg/µL as determined by microplate BCA method
Labeling Method:	Labeled with [U- ¹³ C ₆ , ¹⁵ N ₄]-L-Arginine and [U- ¹³ C ₆ , ¹⁵ N ₂]-L-Lysine
Buffer:	25 mM Tris-HCl, 100 mM glycine, pH 7.3
Storage:	Store at -80°C. Avoid repeated freeze-thaw cycles.
Stability:	Stable for 3 months from receipt of products under proper storage and handling conditions.
RefSeq:	<u>NP_079055</u>
RefSeq Size:	3229
RefSeq ORF:	1263
Synonyms:	PIP5K2C



[View online »](#)

Locus ID:	79837
UniProt ID:	Q8TBX8
Cytogenetics:	12q13.3
Summary:	May play an important role in the production of Phosphatidylinositol bisphosphate (PIP2), in the endoplasmic reticulum.[UniProtKB/Swiss-Prot Function]
Protein Families:	Druggable Genome
Protein Pathways:	Inositol phosphate metabolism, Phosphatidylinositol signaling system, Regulation of actin cytoskeleton

Product images:



Coomassie blue staining of purified PIP4K2C protein (Cat# [TP305976]). The protein was produced from HEK293T cells transfected with PIP4K2C cDNA clone (Cat# [RC205976]) using MegaTran 2.0 (Cat# [TT210002]).