

Product datasheet for PH305974

Nudel (NDEL1) (NM_030808) Human Mass Spec Standard

Product data:

Product Type:	Mass Spec Standards
Description:	NDEL1 MS Standard C13 and N15-labeled recombinant protein (NP_110435)
Species:	Human
Expression Host:	HEK293
Expression cDNA Clone or AA Sequence:	RC205974
Predicted MW:	38.4 kDa
Protein Sequence:	>RC205974 protein sequence Red=Cloning site Green=Tags(s)

MDGEDIPDFSSLKEETAYWKELSLKYKQSFQEAREDELVEFQEGSRELEAELEAQLVQAEQRNRDLQADNQ
RLKYEVEALKEKLEHQYAQSYKQVSVLEDDLSTRAIKEQLHKYVRELEQANDDLERAKRATIVSLEDFFE
QRLNQAIERNAFLESELDEKESLLVSVQRLKDEARDLRQELAVRERQEQEVTRKSAPSSPTLDCEKMDSAV
QASLSLPATPVGKGTENTFPSPKAIPNGFGTSPLTPSARISALNIVGDLRLKVGALESKLAACRNF AKDQ
ASRKSYSISGNVNCVNLNGTKFSRSGHTSFFDKGAVNGFDTAPPPPGLGSSRPSSAPGMLPLSV

TRTRPLEQKLI SEEDLAANDILDYKDDDDKV

Tag:	C-Myc/DDK
Purity:	> 80% as determined by SDS-PAGE and Coomassie blue staining
Concentration:	>0.05 µg/µL as determined by microplate BCA method
Labeling Method:	Labeled with [U- ¹³ C ₆ , ¹⁵ N ₄]-L-Arginine and [U- ¹³ C ₆ , ¹⁵ N ₂]-L-Lysine
Buffer:	25 mM Tris-HCl, 100 mM glycine, pH 7.3
Storage:	Store at -80°C. Avoid repeated freeze-thaw cycles.
Stability:	Stable for 3 months from receipt of products under proper storage and handling conditions.
RefSeq:	<u>NP_110435</u>
RefSeq Size:	2407
RefSeq ORF:	1035
Synonyms:	EOPA; MITAP1; NDE1L1; NDE2; NUDEL
Locus ID:	81565



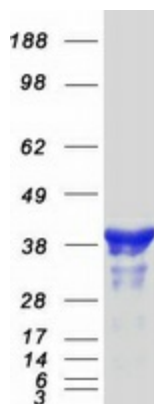
[View online »](#)

UniProt ID: [Q9GZM8](#)

Cytogenetics: 17p13.1

Summary: This gene encodes a coiled-coil protein that plays a role in multiple processes including cytoskeletal organization, cell signaling and neuron migration, outgrowth and maintenance. Alternatively spliced transcript variants encoding multiple isoforms have been observed for this gene, and a pseudogene of this gene is located on the long arm of chromosome X. [provided by RefSeq, Mar 2012]

Product images:



Coomassie blue staining of purified NDEL1 protein (Cat# [TP305974]). The protein was produced from HEK293T cells transfected with NDEL1 cDNA clone (Cat# [RC205974]) using MegaTran 2.0 (Cat# [TT210002]).