

Product datasheet for PH305968

CTRP5 (C1QTNF5) (NM_015645) Human Mass Spec Standard

Product data:

Product Type:	Mass Spec Standards
Description:	C1QTNF5 MS Standard C13 and N15-labeled recombinant protein (NP_056460)
Species:	Human
Expression Host:	HEK293
Expression cDNA Clone or AA Sequence:	RC205968
Predicted MW:	25.3 kDa
Protein Sequence:	>RC205968 representing NM_015645 Red=Cloning site Green=Tags(s) MRPLLVLALLLGLAAGSPPLDDNKIPSLCPGHPGLPGTPGHHSQGLPGRDGRDGRDGPAGPGEKGEGR PGLPGPRGDPGRGEAGPAGPTGPAGECSVPPRSAFSAKRSESRVPPSDAPLPFDRVLVNEQGHYDAVT GKFTCQVPGVYFVAVHATVYRASLQFDLVKNGESIASFFQFFGGWPKPASLSGGAMVRLEPEDQVWVQVG VGDYIGIYASIKTDSTFSGFLVYSDWHSSPVFA TRTRPLEQKLISEEDLAANDILDYKDDDDKV
Tag:	C-Myc/DDK
Purity:	> 80% as determined by SDS-PAGE and Coomassie blue staining
Concentration:	>0.05 µg/µL as determined by microplate BCA method
Labeling Method:	Labeled with [U- ¹³ C ₆ , ¹⁵ N ₄]-L-Arginine and [U- ¹³ C ₆ , ¹⁵ N ₂]-L-Lysine
Buffer:	25 mM Tris-HCl, 100 mM glycine, pH 7.3
Storage:	Store at -80°C. Avoid repeated freeze-thaw cycles.
Stability:	Stable for 3 months from receipt of products under proper storage and handling conditions.
RefSeq:	NP_056460
RefSeq Size:	3927
RefSeq ORF:	729
Synonyms:	CTRP5; MFRP
Locus ID:	114902
UniProt ID:	Q9BXJ0 , A0A024R3F8



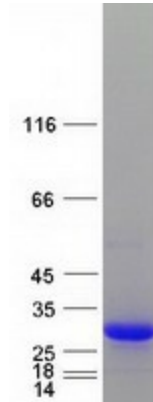
[View online »](#)

Cytogenetics: 11q23.3

Summary: This gene encodes a member of a family of proteins that function as components of basement membranes and may play a role in cell adhesion. Mutations in this gene have been associated with late-onset retinal degeneration. The protein may be encoded by either a bicistronic transcript including sequence from the upstream membrane frizzled-related protein gene (MFRP), or by a monocistronic transcript expressed from an internal promoter. [provided by RefSeq, Jun 2013]

Protein Families: Secreted Protein

Product images:



Coomassie blue staining of purified C1QTNF5 protein (Cat# [TP305968]). The protein was produced from HEK293T cells transfected with C1QTNF5 cDNA clone (Cat# [RC205968]) using MegaTran 2.0 (Cat# [TT210002]).