

Product datasheet for PH305953

CRYZL1 (NM_145858) Human Mass Spec Standard

Product data:

Product Type:	Mass Spec Standards
Description:	CRYZL1 MS Standard C13 and N15-labeled recombinant protein (NP_665857)
Species:	Human
Expression Host:	HEK293
Expression cDNA Clone or AA Sequence:	RC205953
Predicted MW:	38.7 kDa
Protein Sequence:	>RC205953 protein sequence Red=Cloning site Green=Tags(s)

MKGLYFQQSSTDEEITFVFQEKEDLPVTEDNFVKLQVKACALSQINTKLLAEMKMKDLFPVGREIAGIV
LDVGSKVSFFQPDDEVGILPLDSEDPGLCEVVRVHEHYLVHKPEKVTWTEAAGSIRDGVRAYTALHYLS
HLSPGKSVLIMDGASAFGTIAIQLAHRGAKVISTACSLQKLERFRPPIARVIDVSNKGVHVAESCL
EETGGLGVDIVLDAGVRLYSKDDPAVKLQLLPHKHDIIITLLGVGGHWVTEENLQLDPPDSHCLFLKGA
TLAFLNDEVWNL SNVQQGKYLCLKDVMEKLGTVFRPQLDEPIPLYEAKVSMEAVQKNQGRKKQVVQF

TRTRPLEQKLI SEEDLAANDILDYKDDDDKV

Tag:	C-Myc/DDK
Purity:	> 80% as determined by SDS-PAGE and Coomassie blue staining
Concentration:	>0.05 µg/µL as determined by microplate BCA method
Labeling Method:	Labeled with [U- ¹³ C ₆ , ¹⁵ N ₄]-L-Arginine and [U- ¹³ C ₆ , ¹⁵ N ₂]-L-Lysine
Buffer:	25 mM Tris-HCl, 100 mM glycine, pH 7.3
Storage:	Store at -80°C. Avoid repeated freeze-thaw cycles.
Stability:	Stable for 3 months from receipt of products under proper storage and handling conditions.
RefSeq:	NP_665857
RefSeq Size:	1726
RefSeq ORF:	1047
Synonyms:	4P11; QOH-1
Locus ID:	9946



[View online »](#)

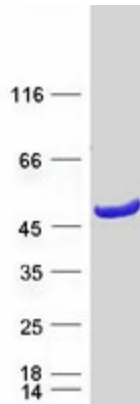
UniProt ID: [O95825](#)

Cytogenetics: 21q22.11

Summary: This gene encodes a protein that has sequence similarity to zeta crystallin, also known as quinone oxidoreductase. This zeta crystallin-like protein also contains an NAD(P)H binding site. Alternatively spliced transcript variants have been observed but their full-length nature has not been completely determined. [provided by RefSeq, Jul 2008]

Protein Families: Druggable Genome

Product images:



Coomassie blue staining of purified CRYZL1 protein (Cat# [TP305953]). The protein was produced from HEK293T cells transfected with CRYZL1 cDNA clone (Cat# [RC205953]) using MegaTran 2.0 (Cat# [TT210002]).