

Product datasheet for PH305943

Albumin (ALB) (NM_000477) Human Mass Spec Standard

Product data:

Product Type:	Mass Spec Standards
Description:	ALB MS Standard C13 and N15-labeled recombinant protein (NP_000468)
Species:	Human
Expression Host:	HEK293
Expression cDNA Clone or AA Sequence:	RC205943
Predicted MW:	69.37 kDa
Protein Sequence:	>RC205943 representing NM_000477 Red=Cloning site Green=Tags(s)

MKWVTFISLLFLFSSAYSRGVFRRDAHKSEVAHRFKDLGEENFKALVLI AFAQYLQQCPFEDHVKLVNEV
TEFAKTCVADESAENCDKSLHTLFGDKLCTVATLRETYGEMADCCAKQEPERNECF LQHKDDNP NLPRLV
RPEVDVMCTAFHDNEETFLKKYLYEIARRHPYFYAPELLFFAKRYKAAFTECCQAADKAACLLPKLDEL R
DEGKASSAKQRLKCASLQKFGERAFKAWAVARLSQRFPKAEFAEVSKLVTDLTKVHTECCHGDLLECADD
RADLAKYICENQDSISSKLEKCEKPLLEKSHCIAEVENDEMPADLPSLAADFVESKDVCKNYAEAKDVF
LGMFLYEYARRHPDYSVLLLR LAKTYETTLEKCCAAADPHECYAKVDFEFKPLVEEPQNLIKQNCELFE
QLGEYKFNALLVRYTKVPQVSTPTLVEVSRNLGKVGSKCKKHPEAKRMPCAEDYLSVVLNQLCVLHEK
TPVSDRVTKCCTESLVNRRPCFSALEVDETYVPKEFNAETFTFHADICTLSEKERQIKKQTALVELVKHK
PKATKEQLKAVMDDFAAFVEKCKADDKETCF AEEGKKLVAASQAALGL

TRTRPLEQKLISEEDLAANDILDYKDDDDKV

Tag:	C-Myc/DDK
Purity:	> 80% as determined by SDS-PAGE and Coomassie blue staining
Concentration:	>0.05 µg/µL as determined by microplate BCA method
Labeling Method:	Labeled with [U- ¹³ C ₆ , ¹⁵ N ₄]-L-Arginine and [U- ¹³ C ₆ , ¹⁵ N ₂]-L-Lysine
Buffer:	25 mM Tris-HCl, 100 mM glycine, pH 7.3
Storage:	Store at -80°C. Avoid repeated freeze-thaw cycles.
Stability:	Stable for 3 months from receipt of products under proper storage and handling conditions.
RefSeq:	NP_000468
RefSeq Size:	2215
RefSeq ORF:	1827



[View online »](#)

Synonyms: FDAHT; HSA; PRO0883; PRO0903; PRO1341

Locus ID: 213

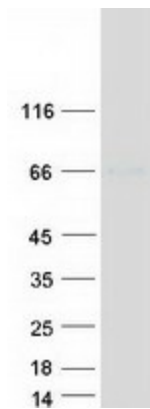
UniProt ID: [P02768](#)

Cytogenetics: 4q13.3

Summary: This gene encodes the most abundant protein in human blood. This protein functions in the regulation of blood plasma colloid osmotic pressure and acts as a carrier protein for a wide range of endogenous molecules including hormones, fatty acids, and metabolites, as well as exogenous drugs. Additionally, this protein exhibits an esterase-like activity with broad substrate specificity. The encoded preproprotein is proteolytically processed to generate the mature protein. A peptide derived from this protein, EPI-X4, is an endogenous inhibitor of the CXCR4 chemokine receptor. [provided by RefSeq, Jul 2016]

Protein Families: Secreted Protein

Product images:



Coomassie blue staining of purified ALB protein (Cat# [TP305943]). The protein was produced from HEK293T cells transfected with ALB cDNA clone (Cat# [RC205943]) using MegaTran 2.0 (Cat# [TT210002]).