

Product datasheet for PH305928

hCG beta (CGB5) (NM_033043) Human Mass Spec Standard

Product data:

Product Type:	Mass Spec Standards
Description:	CGB5 MS Standard C13 and N15-labeled recombinant protein (NP_149032)
Species:	Human
Expression Host:	HEK293
Expression cDNA Clone or AA Sequence:	RC205928
Predicted MW:	17.7 kDa
Protein Sequence:	>RC205928 protein sequence Red=Cloning site Green=Tags(s) MEMFQGLLLLLLLSMGGTWASKEPLRPRCRPINATLAVEKEGCPVCITVNTTICAGYCPTMTRVLQGVLP ALPQVVVCNYRDVRFESIRLPGCPRGVNPVVSYAVALSCQCALCRRSTTDCGGPKDHPLTCDDPRFQDSSS SKAPPPSLPSPSRLPGSDTPILPQ TRTRPLEQKLI SEEDLAANDILDYKDDDDKV
Tag:	C-Myc/DDK
Purity:	> 80% as determined by SDS-PAGE and Coomassie blue staining
Concentration:	>0.05 µg/µL as determined by microplate BCA method
Labeling Method:	Labeled with [U- 13C6, 15N4]-L-Arginine and [U- 13C6, 15N2]-L-Lysine
Buffer:	25 mM Tris-HCl, 100 mM glycine, pH 7.3
Storage:	Store at -80°C. Avoid repeated freeze-thaw cycles.
Stability:	Stable for 3 months from receipt of products under proper storage and handling conditions.
RefSeq:	NP_149032
RefSeq Size:	880
RefSeq ORF:	495
Synonyms:	CGB; HCG; hCGB
Locus ID:	93659
UniProt ID:	P01233 , P0DN86 , A0A0F7RQP8



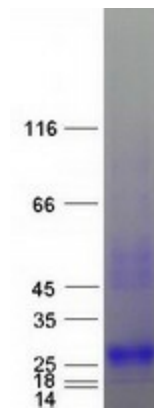
[View online »](#)

Cytogenetics: 19q13.33

Summary: This gene is a member of the glycoprotein hormone beta chain family and encodes the beta 5 subunit of chorionic gonadotropin (CG). Glycoprotein hormones are heterodimers consisting of a common alpha subunit and an unique beta subunit which confers biological specificity. CG is produced by the trophoblastic cells of the placenta and stimulates the ovaries to synthesize the steroids that are essential for the maintenance of pregnancy. The beta subunit of CG is encoded by 6 genes which are arranged in tandem and inverted pairs on chromosome 19q13.3 and contiguous with the luteinizing hormone beta subunit gene. [provided by RefSeq, Jul 2008]

Protein Families: Druggable Genome

Product images:



Coomassie blue staining of purified CGB5 protein (Cat# [TP305928]). The protein was produced from HEK293T cells transfected with CGB5 cDNA clone (Cat# [RC205928]) using MegaTran 2.0 (Cat# [TT210002]).