

Product datasheet for PH305920

Neurofilament (NEFL) (NM_006158) Human Mass Spec Standard

Product data:

Product Type:	Mass Spec Standards
Description:	NEFL MS Standard C13 and N15-labeled recombinant protein (NP_006149)
Species:	Human
Expression Host:	HEK293
Expression cDNA Clone or AA Sequence:	RC205920
Predicted MW:	61.5 kDa
Protein Sequence:	>RC205920 protein sequence Red=Cloning site Green=Tags(s)

MSSFSYEPYYSTSYKRRYVETPRVHISSVRSYSTARSAYSSYSAPVSSLSVRRSYSSSSGSLMPSLEN
LDLSQVAAISNDLKSIRTQEKAQLQDLNDRFASFIERVHELEQQNKVLEAELLVLRQKHSEPSRFRALYE
QEIRDRLRLAAEDATNEKQALQGEREGLEETLRNLQARYEEEEVLSREDAEGRLMEARKGADEAALARAELE
KRIDSLMDEISFLKKVHEEEIAELQAQIQYAQISVEMDVKPDL SAALKDIRAQYEKLAANKMNAEEWF
KSRFTVL TESAANKNTDAVRAAKDEVSESRLLKAKTLEIEACRGMNEALEKQLQELEDKQNADISAMQDT
INKLENELRTTKSEMARYLKEYQDLLNVKMALDIEIAAYRKLLEGEETRLSFTSVGSITSGYSQSSQVFG
RSAYGGLQTSSYLMSTRSFPSYYTSHVQEEQIEVEETIEAAKAEAKDEPPSEGEAEKEEKKDKEEAEKEE
AAEEEEAAKEESEEAKKEEKEEKEEKEEKEEKEEKEEKEEKEEKEEKEEKEEKEEKEEKEEKEEKEEKEE

TRTRPLEQKLI SEEDLAANDILDYKDDDDKV

Tag:	C-Myc/DDK
Purity:	> 80% as determined by SDS-PAGE and Coomassie blue staining
Concentration:	>0.05 µg/µL as determined by microplate BCA method
Labeling Method:	Labeled with [U- 13C6, 15N4]-L-Arginine and [U- 13C6, 15N2]-L-Lysine
Buffer:	25 mM Tris-HCl, 100 mM glycine, pH 7.3
Storage:	Store at -80°C. Avoid repeated freeze-thaw cycles.
Stability:	Stable for 3 months from receipt of products under proper storage and handling conditions.
RefSeq:	<u>NP_006149</u>
RefSeq Size:	3854
RefSeq ORF:	1629



[View online »](#)

Synonyms: CMT1F; CMT2E; CMTDIG; NF-L; NF68; NFL; PPP1R110

Locus ID: 4747

UniProt ID: [P07196](#)

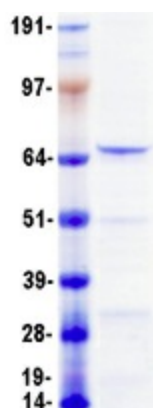
Cytogenetics: 8p21.2

Summary: Neurofilaments are type IV intermediate filament heteropolymers composed of light, medium, and heavy chains. Neurofilaments comprise the axoskeleton and they functionally maintain the neuronal caliber. They may also play a role in intracellular transport to axons and dendrites. This gene encodes the light chain neurofilament protein. Mutations in this gene cause Charcot-Marie-Tooth disease types 1F (CMT1F) and 2E (CMT2E), disorders of the peripheral nervous system that are characterized by distinct neuropathies. A pseudogene has been identified on chromosome Y. [provided by RefSeq, Oct 2008]

Protein Families: Druggable Genome, ES Cell Differentiation/IPS

Protein Pathways: Amyotrophic lateral sclerosis (ALS)

Product images:



Coomassie blue staining of purified NEFL protein (Cat# [TP305920]). The protein was produced from HEK293T cells transfected with NEFL cDNA clone (Cat# [RC205920]) using MegaTran 2.0 (Cat# [TT210002]).