

## Product datasheet for PH305914

### DHX15 (NM\_001358) Human Mass Spec Standard

#### Product data:

Product Type:	Mass Spec Standards
Description:	DHX15 MS Standard C13 and N15-labeled recombinant protein (NP_001349)
Species:	Human
Expression Host:	HEK293
Expression cDNA Clone or AA Sequence:	RC205914
Predicted MW:	90.9 kDa
Protein Sequence:	>RC205914 protein sequence Red=Cloning site Green=Tags(s)

MSKRHRLDLGEDYPSGKKRAGTDGKDRDRDRDREDRSKDRDRERDRGDREEREKEKEKELRASTNAML  
SAGLPPLKASHSAHSTHSAHSTHSAHSTHSAHSTHAGHAGHTSLPQCINPFTNLPHTPRYDILKRLQLPVW  
EYKDRFTDILVRHQSFVLVGETSGKTTQIPQWCVEYMRSLPGPKRGVACTQPRRVAAMSVAQRVADEM  
VMLGQEVGYSIRFEDCSSAKTILKYMTDGMLLREAMNDPLLERYGVIIILDEAHERLATDILMGVLKEVV  
RQRSDLKVIIVMSATLDAGKFQIYFDNCPDLLTIPGRTHPVEIFYTPEPERDYLEAAIRTVIQIHMCEEEEG  
DLLLFLTGQEEIDEACKRIKREVDLGPVEVDIKIIPLYSTLPPQQQRIFEPKPKQNGAIGRKYVVS  
TNIAETSLTIDGVVVIDPGFAKQKVYNPRIRVESLLVTAISKASAAQRAGRGRTRPGKCFRLYTEKAY  
KTEMQDNTYPEILRSNLGSVVLQLKKGIDDLVHFDMDPPAPETLMRALELLNYLAALNDGDGLTELGS  
MMAEFPLDPQLAKMVIASCDYNSNEVLSITAMLSVPQCFVRPTEAKKADEAKMRFADIDGDLTLLNV  
YHAFKQNHESVQWYDNFINYRSLMSADNVRQQLSRIMDRFNLPRRSTDFTSRDYYINIRKALVTGYFMQ  
VAHLERTGHYLVKDNQVVLHPSTVLDHKPEWVLYNEFVLTTKNYIRTCTDIKPEWLVKIAPQYYDMSN  
FPQCEAKRQLDRIIAKLSKEYSQ

TRTRPLEQKLISEEDLAANDILDYKDDDDKV

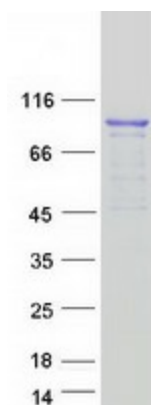
Tag:	C-Myc/DDK
Purity:	> 80% as determined by SDS-PAGE and Coomassie blue staining
Concentration:	>0.05 µg/µL as determined by microplate BCA method
Labeling Method:	Labeled with [U- <sup>13</sup> C <sub>6</sub> , <sup>15</sup> N <sub>4</sub> ]-L-Arginine and [U- <sup>13</sup> C <sub>6</sub> , <sup>15</sup> N <sub>2</sub> ]-L-Lysine
Buffer:	25 mM Tris-HCl, 100 mM glycine, pH 7.3
Storage:	Store at -80°C. Avoid repeated freeze-thaw cycles.
Stability:	Stable for 3 months from receipt of products under proper storage and handling conditions.
RefSeq:	<u><a href="#">NP_001349</a></u>



[View online >](#)

RefSeq Size:	3019
RefSeq ORF:	2385
Synonyms:	DBP1; DDX15; PRP43; PRPF43; PrPp43p
Locus ID:	1665
UniProt ID:	<a href="#">O43143</a>
Cytogenetics:	4p15.2
Summary:	The protein encoded by this gene is a putative ATP-dependent RNA helicase implicated in pre-mRNA splicing. [provided by RefSeq, Jul 2008]
Protein Pathways:	Spliceosome

### Product images:



Coomassie blue staining of purified DHX15 protein (Cat# [TP305914]). The protein was produced from HEK293T cells transfected with DHX15 cDNA clone (Cat# [RC205914]) using MegaTran 2.0 (Cat# [TT210002]).