

Product datasheet for PH305906

CLIC5 (NM_016929) Human Mass Spec Standard

Product data:

Product Type:	Mass Spec Standards
Description:	CLIC5 MS Standard C13 and N15-labeled recombinant protein (NP_058625)
Species:	Human
Expression Host:	HEK293
Expression cDNA Clone or AA Sequence:	RC205906
Predicted MW:	28.2 kDa
Protein Sequence:	>RC205906 protein sequence Red =Cloning site Green =Tags(s) MTDSATANGDDRPEIELFVKAGIDGESIGNCPFSQRLFMILWLKGVVFNVTVDLKRKPADLHNLAPGT HPPFLTFNGDVKTDVNKIEEFLEETLTPEKYPKLAAKHRESNTAGIDIFSKFSAYIKNTKQNNALERG LTKALKKLLDDYLNTPLPEEIDANTCGEDKGSRRKFLDGDELTLADCNLLPKLHVVKIVAKKYRNYDIPAE MTGLWRYLKNAYARDEFTNTCAADSEIELAYADVAKRLSRS TRTRPLEQKLI SEEDLAANDILDYKDDDDKV
Tag:	C-Myc/DDK
Purity:	> 80% as determined by SDS-PAGE and Coomassie blue staining
Concentration:	>0.05 µg/µL as determined by microplate BCA method
Labeling Method:	Labeled with [U- ¹³ C ₆ , ¹⁵ N ₄]-L-Arginine and [U- ¹³ C ₆ , ¹⁵ N ₂]-L-Lysine
Buffer:	25 mM Tris-HCl, 100 mM glycine, pH 7.3
Storage:	Store at -80°C. Avoid repeated freeze-thaw cycles.
Stability:	Stable for 3 months from receipt of products under proper storage and handling conditions.
RefSeq:	NP_058625
RefSeq Size:	5752
RefSeq ORF:	753
Synonyms:	DFNB102; DFNB103; MST130; MSTP130
Locus ID:	53405
UniProt ID:	Q9NZA1 , Q53G01



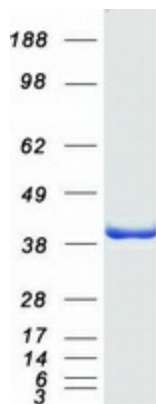
[View online »](#)

Cytogenetics: 6p21.1

Summary: This gene encodes a member of the chloride intracellular channel (CLIC) family of chloride ion channels. The encoded protein associates with actin-based cytoskeletal structures and may play a role in multiple processes including hair cell stereocilia formation, myoblast proliferation and glomerular podocyte and endothelial cell maintenance. Alternatively spliced transcript variants encoding multiple isoforms have been observed for this gene. [provided by RefSeq, Dec 2011]

Protein Families: Druggable Genome, Ion Channels: Other

Product images:



Coomassie blue staining of purified CLIC5 protein (Cat# [TP305906]). The protein was produced from HEK293T cells transfected with CLIC5 cDNA clone (Cat# [RC205906]) using MegaTran 2.0 (Cat# [TT210002]).