

Product datasheet for PH305900

Epiphycan (EPYC) (NM_004950) Human Mass Spec Standard

Product data:

| | |
|---------------------------------------|--|
| Product Type: | Mass Spec Standards |
| Description: | EPYC MS Standard C13 and N15-labeled recombinant protein (NP_004941) |
| Species: | Human |
| Expression Host: | HEK293 |
| Expression cDNA Clone or AA Sequence: | RC205900 |
| Predicted MW: | 36.58 kDa |
| Protein Sequence: | >RC205900 representing NM_004950 Red=Cloning site Green=Tags(s) MKTLAGLVLGLVIFDAAVTAPTLESINYDSEYDATEDLDNLYNYENIPVGKVEIEIATVMPSGNRELL TPPPQPEKAQEEEEESTPRLIDGSSPQEPEFTGVLGPHTNEDFPTCLLCTCISTTVYCDDELDAIPP LPKNTAYFYSRFNRIKKINKNDFASLSDLKRIDLTSNLISEIDEDAFRKLPLRELVLDRDNKIRQLPELP TTLTFIDISNNRLGRKGIKQEAFKDMYDLHLLYLTDNNLDHIPLPLPENLRALHLQNNNILEMHEDTFCN VKNLTYIRKALEDIRLDGNPINLSKTPQAYMCLPRLPVGSLV TRTRPLEQKLISEEDLAANDILDYKDDDDKV |
| Tag: | C-Myc/DDK |
| Purity: | > 80% as determined by SDS-PAGE and Coomassie blue staining |
| Concentration: | >0.05 µg/µL as determined by microplate BCA method |
| Labeling Method: | Labeled with [U- ¹³ C ₆ , ¹⁵ N ₄]-L-Arginine and [U- ¹³ C ₆ , ¹⁵ N ₂]-L-Lysine |
| Buffer: | 25 mM Tris-HCl, 100 mM glycine, pH 7.3 |
| Storage: | Store at -80°C. Avoid repeated freeze-thaw cycles. |
| Stability: | Stable for 3 months from receipt of products under proper storage and handling conditions. |
| RefSeq: | NP_004941 |
| RefSeq Size: | 1594 |
| RefSeq ORF: | 966 |
| Synonyms: | DSPG3; Pg-Lb; PGLB; SLRR3B |
| Locus ID: | 1833 |



[View online »](#)

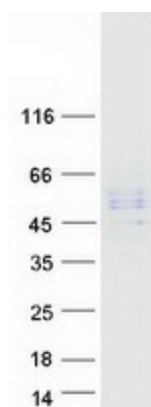
UniProt ID: [Q99645](#), [A0A024RBC3](#)

Cytogenetics: 12q21.33

Summary: Dermatan sulfate proteoglycan 3 is a member of the small leucine-rich repeat proteoglycan family. This gene is composed of seven exons. It regulates fibrillogenesis by interacting with collagen fibrils and other extracellular matrix proteins. [provided by RefSeq, Jul 2008]

Protein Families: Secreted Protein

Product images:



Coomassie blue staining of purified EPYC protein (Cat# [TP305900]). The protein was produced from HEK293T cells transfected with EPYC cDNA clone (Cat# [RC205900]) using MegaTran 2.0 (Cat# [TT210002]).