

Product datasheet for PH305897

CSHL1 (NM_001318) Human Mass Spec Standard

Product data:

Product Type:	Mass Spec Standards
Description:	CSHL1 MS Standard C13 and N15-labeled recombinant protein (NP_001309)
Species:	Human
Expression Host:	HEK293
Expression cDNA Clone or AA Sequence:	RC205897
Predicted MW:	14.9 kDa
Protein Sequence:	>RC205897 protein sequence Red=Cloning site Green=Tags(s) MEETQQKSNLELLHISLLLIIESRLEPVRFRLRSTFTNNLVYDTSDDYHLLKDLEEGIQMLMGRLEDGSH LTGQTLKQTYSKFDTNSHNHDALLKNYGLLHCFRKMMDKVETFLRMVQCRSVEGSCGF TRTRPLEQKLISEEDLAANDILDYKDDDDKV
Tag:	C-Myc/DDK
Purity:	> 80% as determined by SDS-PAGE and Coomassie blue staining
Concentration:	>0.05 µg/µL as determined by microplate BCA method
Labeling Method:	Labeled with [U- 13C6, 15N4]-L-Arginine and [U- 13C6, 15N2]-L-Lysine
Buffer:	25 mM Tris-HCl, 100 mM glycine, pH 7.3
Storage:	Store at -80°C. Avoid repeated freeze-thaw cycles.
Stability:	Stable for 3 months from receipt of products under proper storage and handling conditions.
RefSeq:	NP_001309
RefSeq Size:	661
RefSeq ORF:	384
Synonyms:	CS-5; CSHP1; CSL; GHB4; hCS-L
Locus ID:	1444
UniProt ID:	I6L999
Cytogenetics:	17q23.3



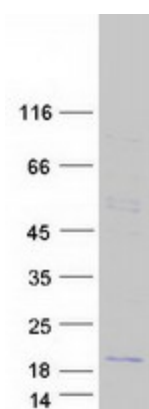
[View online »](#)

Summary:

The protein encoded by this gene is a member of the somatotropin/prolactin family of hormones which play an important role in growth control. The gene, along with four other related genes, is located at the growth hormone locus on chromosome 17 where they are interspersed in the same transcriptional orientation; an arrangement which is thought to have evolved by a series of gene duplications. Although the five genes share a remarkably high degree of sequence identity, they are expressed selectively in different tissues. This particular family member is expressed in placental villi, although it was originally thought to be a pseudogene. In fact, alternative splicing suggests that the majority of the transcripts would be unable to express a secreted protein. Alternatively spliced transcript variants encoding different isoforms have been identified. [provided by RefSeq, Jul 2008]

Protein Families:

Secreted Protein

Product images:

Coomassie blue staining of purified CSHL1 protein (Cat# [TP305897]). The protein was produced from HEK293T cells transfected with CSHL1 cDNA clone (Cat# [RC205897]) using MegaTran 2.0 (Cat# [TT210002]).