

Product datasheet for PH305877

IFI30 (NM_006332) Human Mass Spec Standard

Product data:

Product Type:	Mass Spec Standards
Description:	IFI30 MS Standard C13 and N15-labeled recombinant protein (NP_006323)
Species:	Human
Expression Host:	HEK293
Expression cDNA Clone or AA Sequence:	RC205877
Predicted MW:	28 kDa
Protein Sequence:	>RC205877 protein sequence Red=Cloning site Green=Tags(s) MTLSPLLLFLPPLLLLLDVPTAAVQASPLQALDFFGNGPPVNYKTGNLYLRGPKKSNAPLVNVTLYYEA LCGGCRAFLIRELFPTWLLVMEILNVTLPYGNAQEQNVSGRWEFKCQHGEIECKFNKVEACVLDLDMEL LAFLTIVCMEEFEDMERSLPLCLQLYAPGLSPDTIMECAMGDRGMQLMHANAQRTDALQPPHEYVPWVTV NGKPLEDQTQLLTLVCQLYQGKKPDVCPSSSTSSLRVCFK TRTRPLEQKLI SEEDLAANDILDYKDDDDKV
Tag:	C-Myc/DDK
Purity:	> 80% as determined by SDS-PAGE and Coomassie blue staining
Concentration:	>0.05 µg/µL as determined by microplate BCA method
Labeling Method:	Labeled with [U- ¹³ C ₆ , ¹⁵ N ₄]-L-Arginine and [U- ¹³ C ₆ , ¹⁵ N ₂]-L-Lysine
Buffer:	25 mM Tris-HCl, 100 mM glycine, pH 7.3
Storage:	Store at -80°C. Avoid repeated freeze-thaw cycles.
Stability:	Stable for 3 months from receipt of products under proper storage and handling conditions.
RefSeq:	NP_006323
RefSeq Size:	1034
RefSeq ORF:	750
Synonyms:	GILT; IFI-30; IP-30; IP30
Locus ID:	10437
UniProt ID:	P13284 , A0A024R7N7



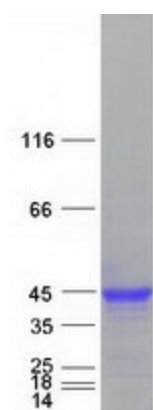
[View online »](#)

Cytogenetics: 19p13.11

Summary: The protein encoded by this gene is a lysosomal thiol reductase that at low pH can reduce protein disulfide bonds. The enzyme is expressed constitutively in antigen-presenting cells and induced by gamma-interferon in other cell types. This enzyme has an important role in MHC class II-restricted antigen processing. [provided by RefSeq, Jul 2008]

Protein Pathways: Antigen processing and presentation

Product images:



Coomassie blue staining of purified IFI30 protein (Cat# [TP305877]). The protein was produced from HEK293T cells transfected with IFI30 cDNA clone (Cat# [RC205877]) using MegaTran 2.0 (Cat# [TT210002]).