

## Product datasheet for PH305863

### C1orf85 (GLMP) (NM\_144580) Human Mass Spec Standard

#### Product data:

Product Type:	Mass Spec Standards
Description:	C1orf85 MS Standard C13 and N15-labeled recombinant protein (NP_653181)
Species:	Human
Expression Host:	HEK293
Expression cDNA Clone or AA Sequence:	RC205863
Predicted MW:	43.7 kDa
Protein Sequence:	>RC205863 representing NM_144580 Red=Cloning site Green=Tags(s)

MRGSVECTWGWGHCAPSPLLLWTLLLFAAPFGLLGEKTRQVSLEVIPNWLGPLQNLLHIRAVGTNSTLHY  
VWSSLGPLAVVMVATNTPHSTLSVNWSLLLSPDPDGLMVLPKDSIQFSSALVFTRLLEFDSTNVSdTAA  
KPLGRPYPPYSLADFSWNNITDSLDPATLSATFQGHMNDPTRTFANGSLAFRVQAFSRSSRPAQPPRL  
HTADTCQLEVALIGASPRGNRSLFGLEVATLGQGPDCPSMQEQHSIDDEYAPAVFQLDQLLWGSLSGFA  
QWRPVAYSQKPGGRESALPCQASPLHPALAYSLPQSPIVRAFFGSGNNFCFNLTFGASTGPGYWDQHYL  
SWSMLLVGVFPVVDGLSPLVLGIMAVALGAPGLMLLGGGLVLLLHHKKYSEYQSIN

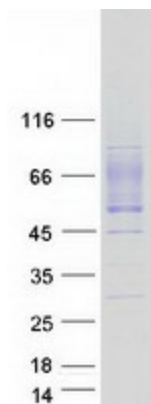
TRTRPLEQKLI SEEDLAANDILDYKDDDDKV

Tag:	C-Myc/DDK
Purity:	> 80% as determined by SDS-PAGE and Coomassie blue staining
Concentration:	>0.05 µg/µL as determined by microplate BCA method
Labeling Method:	Labeled with [U- <sup>13</sup> C <sub>6</sub> , <sup>15</sup> N <sub>4</sub> ]-L-Arginine and [U- <sup>13</sup> C <sub>6</sub> , <sup>15</sup> N <sub>2</sub> ]-L-Lysine
Buffer:	25 mM Tris-HCl, 100 mM glycine, pH 7.3
Storage:	Store at -80°C. Avoid repeated freeze-thaw cycles.
Stability:	Stable for 3 months from receipt of products under proper storage and handling conditions.
RefSeq:	<u><a href="#">NP_653181</a></u>
RefSeq Size:	1603
RefSeq ORF:	1218
Synonyms:	C1orf85; NCU-G1
Locus ID:	112770



[View online »](#)

UniProt ID:	<a href="#">Q8WWB7</a>
Cytogenetics:	1q22
Summary:	Required to protect lysosomal transporter MFSD1 from lysosomal proteolysis and for MFSD1 lysosomal localization.[UniProtKB/Swiss-Prot Function]
Protein Families:	Transmembrane

**Product images:**

Coomassie blue staining of purified GLMP protein (Cat# [TP305863]). The protein was produced from HEK293T cells transfected with GLMP cDNA clone (Cat# [RC205863]) using MegaTran 2.0 (Cat# [TT210002]).