

Product datasheet for PH305853

PIM1 (NM_002648) Human Mass Spec Standard

Product data:

Product Type:	Mass Spec Standards
Description:	PIM1 MS Standard C13 and N15-labeled recombinant protein (NP_002639)
Species:	Human
Expression Host:	HEK293
Expression cDNA Clone or AA Sequence:	RC205853
Predicted MW:	35.5 kDa
Protein Sequence:	>RC205853 representing NM_002648 Red=Cloning site Green=Tags(s) MLLSKINSLAHLRAAPCNDLHATKLAPGKEKEPLESQYQVGPLLGSGGFGSVYSGIRVSDNLPVAIKHVE KDRISDWGELPNGTRVPMEVVLLKKVSSGFSGVIRLLDWFERPDSFVLILERPEPVQDLDFDITERGALQ EELARFFWQVLEAVRHCHNCGVLHRDIKDENILIDLNRGELKLIDFGSGALLKDTVYTFDGTTRVYSP EWIRYHRYHGRSAAVWSLIGILLYDMVCGDIPFEHDEEIIIRGQVFRQVRSSECQHLIRWCLALRPSDRPT FEEIQNHPWMQDVLLPQETAIEIHLHSLSPGPSK TRTRPLEQKLISEEDLAANDILDYKDDDDKV
Tag:	C-Myc/DDK
Purity:	> 80% as determined by SDS-PAGE and Coomassie blue staining
Concentration:	>0.05 µg/µL as determined by microplate BCA method
Labeling Method:	Labeled with [U- ¹³ C ₆ , ¹⁵ N ₄]-L-Arginine and [U- ¹³ C ₆ , ¹⁵ N ₂]-L-Lysine
Buffer:	25 mM Tris-HCl, 100 mM glycine, pH 7.3
Storage:	Store at -80°C. Avoid repeated freeze-thaw cycles.
Stability:	Stable for 3 months from receipt of products under proper storage and handling conditions.
RefSeq:	NP_002639
RefSeq Size:	2684
RefSeq ORF:	939
Synonyms:	PIM
Locus ID:	5292



[View online »](#)

UniProt ID: [P11309](#), [A0A024RD25](#)

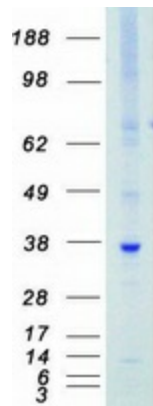
Cytogenetics: 6p21.2

Summary: The protein encoded by this gene belongs to the Ser/Thr protein kinase family, and PIM subfamily. This gene is expressed primarily in B-lymphoid and myeloid cell lines, and is overexpressed in hematopoietic malignancies and in prostate cancer. It plays a role in signal transduction in blood cells, contributing to both cell proliferation and survival, and thus provides a selective advantage in tumorigenesis. Both the human and orthologous mouse genes have been reported to encode two isoforms (with preferential cellular localization) resulting from the use of alternative in-frame translation initiation codons, the upstream non-AUG (CUG) and downstream AUG codons (PMIDs:16186805, 1825810).[provided by RefSeq, Aug 2011]

Protein Families: Druggable Genome, ES Cell Differentiation/IPS, Protein Kinase

Protein Pathways: Acute myeloid leukemia, Jak-STAT signaling pathway

Product images:



Coomassie blue staining of purified PIM1 protein (Cat# [TP305853]). The protein was produced from HEK293T cells transfected with PIM1 cDNA clone (Cat# [RC205853]) using MegaTran 2.0 (Cat# [TT210002]).