

Product datasheet for PH305842

FRS2 (NM_006654) Human Mass Spec Standard

Product data:

Product Type:	Mass Spec Standards
Description:	FRS2 MS Standard C13 and N15-labeled recombinant protein (NP_006645)
Species:	Human
Expression Host:	HEK293
Expression cDNA Clone or AA Sequence:	RC205842
Predicted MW:	57.5 kDa
Protein Sequence:	>RC205842 protein sequence Red=Cloning site Green=Tags(s)
	<p>MGSCCSPDKDTPVDNHRNKFKVINVDDDGNELGSGIMELTDETLILYTRKRDSVKWHYLCLRRYGYDSN LFSFESGRRCTGQGIFAFKCARAEELFNMLQEIMQNNSINVVEEPVVERNHHQTELEVPRTPRTPTTPG FAAQNLPNGYPRYPSPFGDASSHPSSRHPSVGSARLPSVGEESTHPLLVAEEQVHTYVNTTGVQEERKRT SVHVPLEARVSNAESSTPKEEPSSIEDRDPQILLEPEGVKFLGPTPVQKQLMEKEKLEQLGRDQVSGSG ANNTEWDTGYDSDERRDAPSVNKLVEENINGLSIPSASGVRRGRLTSTSTSDTQINNSAQRRTALLNVE NLPPLPPWEARKLSRDEDDNLGPKTPSLNGYHNNLDPMHNYVNTENVTPASAHKIEYSRRRDCTPTVF NFDIRRPSLEHRQLNYIQVDLEGGSDSNPQTPKTPPTPLPQTPTRRETELYAVIDIERTAAMSNLQKALP RDDGTSRKTRHNSTDLPMLAWK</p> <p>TRTRPLEQKLI SEEDLAANDILDYKDDDDKV</p>
Tag:	C-Myc/DDK
Purity:	> 80% as determined by SDS-PAGE and Coomassie blue staining
Concentration:	>0.05 µg/µL as determined by microplate BCA method
Labeling Method:	Labeled with [U- ¹³ C ₆ , ¹⁵ N ₄]-L-Arginine and [U- ¹³ C ₆ , ¹⁵ N ₂]-L-Lysine
Buffer:	25 mM Tris-HCl, 100 mM glycine, pH 7.3
Storage:	Store at -80°C. Avoid repeated freeze-thaw cycles.
Stability:	Stable for 3 months from receipt of products under proper storage and handling conditions.
RefSeq:	NP_006645
RefSeq Size:	6883
RefSeq ORF:	1536



[View online »](#)

Synonyms: FRS1A; FRS2A; FRS2alpha; SNT; SNT-1; SNT1

Locus ID: 10818

UniProt ID: [Q8WU20](#), [L7RTG7](#)

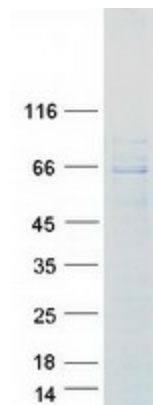
Cytogenetics: 12q15

Summary: Adapter protein that links activated FGR and NGF receptors to downstream signaling pathways. Plays an important role in the activation of MAP kinases and in the phosphorylation of PIK3R1, the regulatory subunit of phosphatidylinositol 3-kinase, in response to ligand-mediated activation of FGFR1. Modulates signaling via SHC1 by competing for a common binding site on NTRK1.[UniProtKB/Swiss-Prot Function]

Protein Families: Druggable Genome

Protein Pathways: Neurotrophin signaling pathway

Product images:



Coomassie blue staining of purified FRS2 protein (Cat# [TP305842]). The protein was produced from HEK293T cells transfected with FRS2 cDNA clone (Cat# [RC205842]) using MegaTran 2.0 (Cat# [TT210002]).