

Product datasheet for PH305839

WSB1 (NM_015626) Human Mass Spec Standard

Product data:

Product Type:	Mass Spec Standards
Description:	WSB1 MS Standard C13 and N15-labeled recombinant protein (NP_056441)
Species:	Human
Expression Host:	HEK293
Expression cDNA Clone or AA Sequence:	RC205839
Predicted MW:	47.4 kDa
Protein Sequence:	>RC205839 protein sequence Red=Cloning site Green=Tags(s)

MASFPPRVNEKEIVRLRTIGELLAPAAPFDKCKGRENWTVAFAPDGSYFAWSQGHRTVKLV PWSQCLQNF
LLHGTKNVTNSSLRLPRQNSDGGQKNKPREHIIDCGDIVWSLAFGSSVPEKQSRCVNI EWHRFRFGDQ
LLLATGLNNGRIKIWDVYTGKLLLNLVDHTEVVRDLTFAPDGLILVSASRDKTLRVWDLKDDGNNMKVL
RGHQNWVYSCAFSPDSSMLCSVGASKAVFLWNMDKYTMIRKLEGHHDVACDFSPDGALLATASYDTRV
YIWDPHNGDILMEFGHLFPPPTPIFAGGANDRWVRSVSFSDHGLHVASLADDKMVRFWRIDEDYPVQVAP
LSNGLCCAFSTDGSLAAGTHDGSVYFWATPRQVPSLQHLCRMSIRRVMPTQEVQELPIPSKLLLEFLSYR
I

TRTRPLEQKLI SEEDLAANDILDYKDDDDKV

Tag:	C-Myc/DDK
Purity:	> 80% as determined by SDS-PAGE and Coomassie blue staining
Concentration:	>0.05 µg/µL as determined by microplate BCA method
Labeling Method:	Labeled with [U- ¹³ C ₆ , ¹⁵ N ₄]-L-Arginine and [U- ¹³ C ₆ , ¹⁵ N ₂]-L-Lysine
Buffer:	25 mM Tris-HCl, 100 mM glycine, pH 7.3
Storage:	Store at -80°C. Avoid repeated freeze-thaw cycles.
Stability:	Stable for 3 months from receipt of products under proper storage and handling conditions.
RefSeq:	<u>NP_056441</u>
RefSeq Size:	2849
RefSeq ORF:	1263
Synonyms:	SWIP1; WSB-1



[View online »](#)

Locus ID: 26118

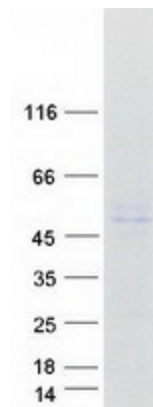
UniProt ID: [Q9Y6I7](#), [A0A024QZ51](#), [Q8NC76](#)

Cytogenetics: 17q11.1

Summary: This gene encodes a member of the WD-protein subfamily. This protein shares a high sequence identity to mouse and chick proteins. It contains several WD-repeats spanning most of the protein and an SOCS box in the C-terminus. Alternatively spliced transcript variants encoding distinct isoforms have been found for this gene. [provided by RefSeq, Jul 2008]

Protein Families: Druggable Genome

Product images:



Coomassie blue staining of purified WSB1 protein (Cat# [TP305839]). The protein was produced from HEK293T cells transfected with WSB1 cDNA clone (Cat# [RC205839]) using MegaTran 2.0 (Cat# [TT210002]).