

## Product datasheet for PH305825

### ARHGEF14 (MCF2L) (NM\_024979) Human Mass Spec Standard

#### Product data:

Product Type:	Mass Spec Standards
Description:	MCF2L MS Standard C13 and N15-labeled recombinant protein (NP_079255)
Species:	Human
Expression Host:	HEK293
Expression cDNA Clone or AA Sequence:	RC205825
Predicted MW:	111.9 kDa
Protein Sequence:	>RC205825 protein sequence Red=Cloning site Green=Tags(s)

MTVRRLLSLLCRDLWALWLLLKAGADEIMHQDIVPLCAADIQDQLKRFAYLSGGRGQDGPVITFPDYPA  
FSEIPDKEFQNVMTYLTSLPSLQDAGIGFILVIDRRRDKWTSVKASVLRIAASFPANLQLVLVLRPTGFF  
QRTLSDIAFKFNRRDDFKMKVPVIMLSSVPDLHGVIDKSQLEDLGGTLDYCHSRWLCQRTAIESFALMVK  
QTAQMLQSFGTLEAETELPNDVQSTSSVLCATEKDKKAKEDLRLALKEGHSVLESRELQAESEPSVN  
QQDLNQATVQRLLAQLNETEAAFDEFWAKHQKLEQCLQLRHFEQGFREVKAILDAASQKIATFTDIGN  
SLAHVEHLLRDLASFEEKSGVAVERARALSLDGEQLIGNKHYAVDSIRPKCQELRHLCDQFSAEIARRRG  
LLSKSLELHRRLETSMKWCDEGIYLLASQPVDKCQSQDGAEEALQEIEKFLETGAENKIQELNAIYKEYE  
SILNQDLMEHVRKVFQKQASMEEVFHRRAQSLKLAARQTRPVQPVAPRPEALAKSPCPSPIRRGSENS  
SSEGGALRRGPYRRAKSEMSESRQGRGSAGEEEESLAILRRHVMSELLDTERAYVEELLCVLEGYAAEMD  
NPLMAHLLSTGLHNKDDVLFGNMEEIYHFHNRIFLRELENYTDCPELVGRCFLERMEDFQIYKEYCQNKP  
RSESLWRQCSDCPFQECQRKLDHKLSDSYLLKPVQRITKYQLLLKEMLKYSRNCGEAEDLQEALSSIL  
GILKAVNDSMHLIAITGYDGNLGDGKLLMQGSFSVWTDHHRGHTKVKELARFKPMQRHLFLHEKAVLFC  
KKREENGEGYEKAPSYSYKQSLNMAAVGITENVKDAKFEIWNAREEVYIVQAPTPEIKAAWVNEIRK  
VLTSQLQACREASQHRALQSQSLPLPAPTSTSPSRGNSRNIKKLEERKTDPLSLEGYVSSAPLTKPPEK  
GKEP

TRTRPLEQKLISEEDLAANDILDYKDDDDKV

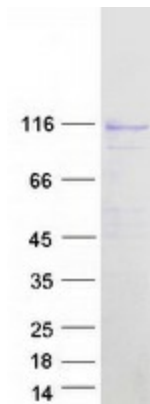
Tag:	C-Myc/DDK
Purity:	> 80% as determined by SDS-PAGE and Coomassie blue staining
Concentration:	>0.05 µg/µL as determined by microplate BCA method
Labeling Method:	Labeled with [U- <sup>13</sup> C <sub>6</sub> , <sup>15</sup> N <sub>4</sub> ]-L-Arginine and [U- <sup>13</sup> C <sub>6</sub> , <sup>15</sup> N <sub>2</sub> ]-L-Lysine
Buffer:	25 mM Tris-HCl, 100 mM glycine, pH 7.3
Storage:	Store at -80°C. Avoid repeated freeze-thaw cycles.



[View online »](#)

Stability:	Stable for 3 months from receipt of products under proper storage and handling conditions.
RefSeq:	<a href="#">NP_079255</a>
RefSeq Size:	6456
RefSeq ORF:	2955
Synonyms:	ARHGEF14; DBS; OST
Locus ID:	23263
UniProt ID:	<a href="#">O15068</a>
Cytogenetics:	13q34
Summary:	This gene encodes a guanine nucleotide exchange factor that interacts specifically with the GTP-bound Rac1 and plays a role in the Rho/Rac signaling pathways. A variant in this gene was associated with osteoarthritis. Alternative splicing results in multiple transcript variants. [provided by RefSeq, Mar 2016]

### Product images:



Coomassie blue staining of purified MCF2L protein (Cat# [TP305825]). The protein was produced from HEK293T cells transfected with MCF2L cDNA clone (Cat# [RC205825]) using MegaTran 2.0 (Cat# [TT210002]).