

Product datasheet for PH305803

RPS19 (NM_001022) Human Mass Spec Standard

Product data:

Product Type:	Mass Spec Standards
Description:	RPS19 MS Standard C13 and N15-labeled recombinant protein (NP_001013)
Species:	Human
Expression Host:	HEK293
Expression cDNA Clone or AA Sequence:	RC205803
Predicted MW:	16.1 kDa
Protein Sequence:	>RC205803 protein sequence Red=Cloning site Green=Tags(s) MPGVTVKDVNQEFVRLAAFLKKSGKLVPEWVDTVKLAKHKELAPYDENWFYTRAASTARHLYLRGGA GVGSMTKIYGGQRNGVMPSHFSRGSKSVARRVLQALEGLKMVEKDQDGGRKLTPQGQRDLDRAGQVAA ANKKH TRTRPLEQKLI SEEDLAANDILDYKDDDDKV
Tag:	C-Myc/DDK
Purity:	> 80% as determined by SDS-PAGE and Coomassie blue staining
Concentration:	>0.05 µg/µL as determined by microplate BCA method
Labeling Method:	Labeled with [U- ¹³ C ₆ , ¹⁵ N ₄]-L-Arginine and [U- ¹³ C ₆ , ¹⁵ N ₂]-L-Lysine
Buffer:	25 mM Tris-HCl, 100 mM glycine, pH 7.3
Storage:	Store at -80°C. Avoid repeated freeze-thaw cycles.
Stability:	Stable for 3 months from receipt of products under proper storage and handling conditions.
RefSeq:	NP_001013
RefSeq Size:	872
RefSeq ORF:	435
Synonyms:	DBA; DBA1; eS19; LOH19CR1; S19
Locus ID:	6223
UniProt ID:	P39019 , B0ZBD0



[View online »](#)

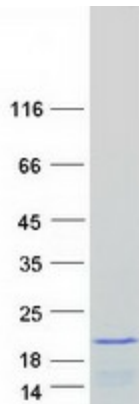
Cytogenetics: 19q13.2

Summary: Ribosomes, the organelles that catalyze protein synthesis, consist of a small 40S subunit and a large 60S subunit. Together these subunits are composed of 4 RNA species and approximately 80 structurally distinct proteins. This gene encodes a ribosomal protein that is a component of the 40S subunit. The protein belongs to the S19E family of ribosomal proteins. It is located in the cytoplasm. Mutations in this gene cause Diamond-Blackfan anemia (DBA), a constitutional erythroblastopenia characterized by absent or decreased erythroid precursors, in a subset of patients. This suggests a possible extra-ribosomal function for this gene in erythropoietic differentiation and proliferation, in addition to its ribosomal function. Higher expression levels of this gene in some primary colon carcinomas compared to matched normal colon tissues has been observed. As is typical for genes encoding ribosomal proteins, there are multiple processed pseudogenes of this gene dispersed through the genome. [provided by RefSeq, Jul 2008]

Protein Families: Druggable Genome

Protein Pathways: Ribosome

Product images:



Coomassie blue staining of purified RPS19 protein (Cat# [TP305803]). The protein was produced from HEK293T cells transfected with RPS19 cDNA clone (Cat# [RC205803]) using MegaTran 2.0 (Cat# [TT210002]).