

## Product datasheet for PH305799

### PPP1R14A (NM\_033256) Human Mass Spec Standard

#### Product data:

Product Type:	Mass Spec Standards
Description:	PPP1R14A MS Standard C13 and N15-labeled recombinant protein (NP_150281)
Species:	Human
Expression Host:	HEK293
Expression cDNA Clone or AA Sequence:	RC205799
Predicted MW:	16.7 kDa
Protein Sequence:	>RC205799 protein sequence Red=Cloning site Green=Tags(s)  MAAQRLGKRVLSKLQSPSRARGPGGSPGGLQKRHARVTVKYDRRELQRRLDVEKWIDGRLEELYRGMEAD MPDEINIDELLESEEEERSRKIQGLLKSCGKPVEDFIQELLAKLQGLHRQPGLRQPSPSHDGSLSPLQD RARTAHP  TRTRPLEQKLISEEDLAANDILDYKDDDDKV
Tag:	C-Myc/DDK
Purity:	> 80% as determined by SDS-PAGE and Coomassie blue staining
Concentration:	>0.05 µg/µL as determined by microplate BCA method
Labeling Method:	Labeled with [U- 13C6, 15N4]-L-Arginine and [U- 13C6, 15N2]-L-Lysine
Buffer:	25 mM Tris-HCl, 100 mM glycine, pH 7.3
Storage:	Store at -80°C. Avoid repeated freeze-thaw cycles.
Stability:	Stable for 3 months from receipt of products under proper storage and handling conditions.
RefSeq:	<u>NP_150281</u>
RefSeq Size:	782
RefSeq ORF:	441
Synonyms:	CPI-17; CPI17; PPP1INL
Locus ID:	94274
UniProt ID:	<u>Q96A00</u>



[View online »](#)

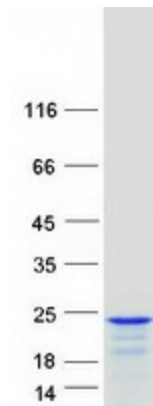
**Cytogenetics:** 19q13.2

**Summary:** The protein encoded by this gene belongs to the protein phosphatase 1 (PP1) inhibitor family. This protein is an inhibitor of smooth muscle myosin phosphatase, and has higher inhibitory activity when phosphorylated. Inhibition of myosin phosphatase leads to increased myosin phosphorylation and enhanced smooth muscle contraction. Alternatively spliced transcript variants encoding different isoforms have been noted for this gene. [provided by RefSeq, Sep 2011]

**Protein Families:** Druggable Genome

**Protein Pathways:** Vascular smooth muscle contraction

### Product images:



Coomassie blue staining of purified PPP1R14A protein (Cat# [TP305799]). The protein was produced from HEK293T cells transfected with PPP1R14A cDNA clone (Cat# [RC205799]) using MegaTran 2.0 (Cat# [TT210002]).