

## Product datasheet for PH305793

### PUSL1 (NM\_153339) Human Mass Spec Standard

#### Product data:

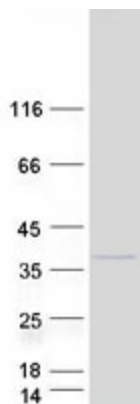
Product Type:	Mass Spec Standards
Description:	PUSL1 MS Standard C13 and N15-labeled recombinant protein (NP_699170)
Species:	Human
Expression Host:	HEK293
Expression cDNA Clone or AA Sequence:	RC205793
Predicted MW:	33.2 kDa
Protein Sequence:	>RC205793 protein sequence Red=Cloning site Green=Tags(s)  MSSAPASGSVRARYLVYFQYVGTDFNGVAAVRGTQRAVGVQNYLEEAERLNSVEPVRFITSSRTDAGVH ALSNA AHL DVQR RSGRPPFPPEVLAEALNTHLRHPAIRVLRFRVPSDFHARHAATSRTYLYRLATGCHR RDELPVFERNLCWTL PADCLDMVAMQEAHQHLLGTHDFS AFQSAGSPVPSVVRTLRVSVSPGQASPLVT PEESRKLRFWNLEFESQSFLYRQVRRMTAVLVAVGLGALAPAQVKITILESQDPLGKHQTRVAPAHGLFLK SVLYGNLGAASCTLQGPQFGSHG  TRTRPLEQKLI SEEDLAANDILDYKDDDDKV
Tag:	C-Myc/DDK
Purity:	> 80% as determined by SDS-PAGE and Coomassie blue staining
Concentration:	>0.05 µg/µL as determined by microplate BCA method
Labeling Method:	Labeled with [U- <sup>13</sup> C <sub>6</sub> , <sup>15</sup> N <sub>4</sub> ]-L-Arginine and [U- <sup>13</sup> C <sub>6</sub> , <sup>15</sup> N <sub>2</sub> ]-L-Lysine
Buffer:	25 mM Tris-HCl, 100 mM glycine, pH 7.3
Storage:	Store at -80°C. Avoid repeated freeze-thaw cycles.
Stability:	Stable for 3 months from receipt of products under proper storage and handling conditions.
RefSeq:	<a href="#">NP_699170</a>
RefSeq Size:	1262
RefSeq ORF:	909
Locus ID:	126789
UniProt ID:	<a href="#">Q8N0Z8</a>



[View online »](#)

Cytogenetics: 1p36.33

### Product images:



Coomassie blue staining of purified PUSL1 protein (Cat# [TP305793]). The protein was produced from HEK293T cells transfected with PUSL1 cDNA clone (Cat# [RC205793]) using MegaTran 2.0 (Cat# [TT210002]).