

Product datasheet for PH305776

KLHDC4 (NM_017566) Human Mass Spec Standard

Product data:

Product Type:	Mass Spec Standards
Description:	KLHDC4 MS Standard C13 and N15-labeled recombinant protein (NP_060036)
Species:	Human
Expression Host:	HEK293
Expression cDNA Clone or AA Sequence:	RC205776
Predicted MW:	57.9 kDa
Protein Sequence:	>RC205776 protein sequence Red=Cloning site Green=Tags(s)

MGKKGKKEKGRGAEKTAAKMEKKVSKRSRKEEDLEALIAHFQTLDAKRTQTVELPCPPSPRLNASLS
VHPEKDELILFGGEYFNGQKTFLYNELYYNTRKDTWTKVDIPSPPPRRCAHQAVVVPQGGGQLWVFGGE
FASPNGEQFYHYKDLWVLHLATKTWEQVKSTGGPSGRSGHRMVAWKRQLILFGGFHESTRDYIYYNDVYA
FNLDFTWSKLSPSGTGPTPRSGCQMSVTPQGGIVVYGGYSKQRVKKDVKGTRHSDMFLKPEDGREDK
WVWTRMNP SGVKPTPRSGFSVAMAPNHQTLFFGGVCDEEEEEESL SGEFFNDLYFYDATRNRFEGQLKGP
KSEKKRRRRGRKEEPEGGRPACGGAGTQGPVQLVKEVVAEDGTVVTIKQVLTAPGSAGQPRSEDEDSLE
EAGSPAPGPCPRSNAMLAVKHGVLVYVYGGMFEAGDRQVTLSDLHCLDLHRMEAWKALVEMDPETQEWLEE
TDSEEDSEEVGAEGGVDEDESGEESGAED

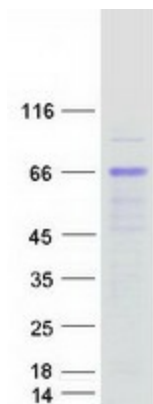
TRTRPLEQKLI SEEDLAANDILDYKDDDDKV

Tag:	C-Myc/DDK
Purity:	> 80% as determined by SDS-PAGE and Coomassie blue staining
Concentration:	>0.05 µg/µL as determined by microplate BCA method
Labeling Method:	Labeled with [U- ¹³ C ₆ , ¹⁵ N ₄]-L-Arginine and [U- ¹³ C ₆ , ¹⁵ N ₂]-L-Lysine
Buffer:	25 mM Tris-HCl, 100 mM glycine, pH 7.3
Storage:	Store at -80°C. Avoid repeated freeze-thaw cycles.
Stability:	Stable for 3 months from receipt of products under proper storage and handling conditions.
RefSeq:	<u>NP_060036</u>
RefSeq Size:	1944
RefSeq ORF:	1560



[View online »](#)

Locus ID: 54758
UniProt ID: [Q8TBB5](#)
Cytogenetics: 16q24.2

Product images:

Coomassie blue staining of purified KLHDC4 protein (Cat# [TP305776]). The protein was produced from HEK293T cells transfected with KLHDC4 cDNA clone (Cat# [RC205776]) using MegaTran 2.0 (Cat# [TT210002]).