

## Product datasheet for PH305723

### Proteasome subunit beta type 4 (PSMB4) (NM\_002796) Human Mass Spec Standard

#### Product data:

Product Type:	Mass Spec Standards
Description:	PSMB4 MS Standard C13 and N15-labeled recombinant protein (NP_002787)
Species:	Human
Expression Host:	HEK293
Expression cDNA Clone or AA Sequence:	RC205723
Predicted MW:	29 kDa
Protein Sequence:	>RC205723 representing NM_002796 Red=Cloning site Green=Tags(s)  MEAF LGSR SGLWAGGPAPGQFYRIPSTPDSFMDPASALYRGPITRTRQNPMTGT SVLGVKFEGGVVIAAD MLGSYGLARFRNISRIMRVNNSMLGASGDYADFQYLKQVLGQMVIDEELLGDGHSYSPRAIHSWLTRA MYSRRSKMNPLWNTMVIIGGYADGESFLGYVDMLGVAYEAPSLATGYGAYLAQPLLREVLEKQPVLSQTEA RDLVERCMRVLYYRDARSYNRFQIATVTEKGVIEGPLSTETNWDIAHMISGFE  TRTRPLEQKLI SEEDLAANDILDYKDDDDKV
Tag:	C-Myc/DDK
Purity:	> 80% as determined by SDS-PAGE and Coomassie blue staining
Concentration:	>0.05 µg/µL as determined by microplate BCA method
Labeling Method:	Labeled with [U- <sup>13</sup> C <sub>6</sub> , <sup>15</sup> N <sub>4</sub> ]-L-Arginine and [U- <sup>13</sup> C <sub>6</sub> , <sup>15</sup> N <sub>2</sub> ]-L-Lysine
Buffer:	25 mM Tris-HCl, 100 mM glycine, pH 7.3
Storage:	Store at -80°C. Avoid repeated freeze-thaw cycles.
Stability:	Stable for 3 months from receipt of products under proper storage and handling conditions.
RefSeq:	<a href="#">NP_002787</a>
RefSeq Size:	925
RefSeq ORF:	792
Synonyms:	HN3; HsN3; PRAAS3; PROS-26; PROS26
Locus ID:	5692
UniProt ID:	<a href="#">P28070</a> , <a href="#">A0A140VK46</a>



[View online »](#)

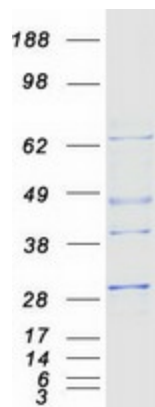
Cytogenetics: 1q21.3

**Summary:** The proteasome is a multicatalytic proteinase complex with a highly ordered ring-shaped 20S core structure. The core structure is composed of 4 rings of 28 non-identical subunits; 2 rings are composed of 7 alpha subunits and 2 rings are composed of 7 beta subunits. Proteasomes are distributed throughout eukaryotic cells at a high concentration and cleave peptides in an ATP/ubiquitin-dependent process in a non-lysosomal pathway. An essential function of a modified proteasome, the immunoproteasome, is the processing of class I MHC peptides. This gene encodes a member of the proteasome B-type family, also known as the T1B family, that is a 20S core beta subunit. [provided by RefSeq, Jul 2008]

**Protein Families:** Druggable Genome, Protease

**Protein Pathways:** Proteasome

### Product images:



Coomassie blue staining of purified PSMB4 protein (Cat# [TP305723]). The protein was produced from HEK293T cells transfected with PSMB4 cDNA clone (Cat# [RC205723]) using MegaTran 2.0 (Cat# [TT210002]).