

## Product datasheet for PH305704

### LMAN2 (NM\_006816) Human Mass Spec Standard

#### Product data:

Product Type:	Mass Spec Standards
Description:	LMAN2 MS Standard C13 and N15-labeled recombinant protein (NP_006807)
Species:	Human
Expression Host:	HEK293
Expression cDNA Clone or AA Sequence:	RC205704
Predicted MW:	40.2 kDa
Protein Sequence:	>RC205704 protein sequence Red=Cloning site Green=Tags(s)
	MAAEGWIWRWGWRRCLGRPGLLGPGPGPTTFLFLLLLGSVTADITDGNSEHLKREHSLIKPYQGVGSS SMPLWDFQGSTMLTSQYVRLTPDERSKEGSIWNHQPCFLKDWEMHVHFKVHGTGKKNLHGDGIALWYTRD RLVPGPVFGSKDNFHGLAIFLDTYPNDEITERVFPYISVMVNGSLSYDHKSDGRWTELACTADFRNRD HDTFLAVRYSRGLTVMTDLEDKNEWKNCIDITGVRLPTGYFFGASAGTGDLSDNHDIIISMKLFQLMVEH TPDEESIDWTKIEPSVNFLLKSPKDNVDDPTGNFRSGPLTGWRVFLLLLALLGIVVCAVVGAVVFQKRQE RNKRFY
	TRTRPLEQKLI SEEDLAANDILDYKDDDDKV
Tag:	C-Myc/DDK
Purity:	> 80% as determined by SDS-PAGE and Coomassie blue staining
Concentration:	>0.05 µg/µL as determined by microplate BCA method
Labeling Method:	Labeled with [U- <sup>13</sup> C <sub>6</sub> , <sup>15</sup> N <sub>4</sub> ]-L-Arginine and [U- <sup>13</sup> C <sub>6</sub> , <sup>15</sup> N <sub>2</sub> ]-L-Lysine
Buffer:	25 mM Tris-HCl, 100 mM glycine, pH 7.3
Storage:	Store at -80°C. Avoid repeated freeze-thaw cycles.
Stability:	Stable for 3 months from receipt of products under proper storage and handling conditions.
RefSeq:	<u><a href="#">NP_006807</a></u>
RefSeq Size:	1853
RefSeq ORF:	1068
Synonyms:	C5orf8; GP36B; VIP36
Locus ID:	10960



[View online »](#)

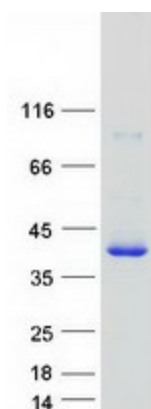
UniProt ID: [Q12907](#), [A0A384NPY7](#)

Cytogenetics: 5q35.3

Summary: This gene encodes a type I transmembrane lectin that shuttles between the endoplasmic reticulum, the Golgi apparatus and the plasma membrane. The encoded protein binds high mannose type glycoproteins and may facilitate their sorting, trafficking and quality control. [provided by RefSeq, Oct 2008]

Protein Families: Transmembrane

### Product images:



Coomassie blue staining of purified LMAN2 protein (Cat# [TP305704]). The protein was produced from HEK293T cells transfected with LMAN2 cDNA clone (Cat# [RC205704]) using MegaTran 2.0 (Cat# [TT210002]).