

Product datasheet for PH305674

Moesin (MSN) (NM_002444) Human Mass Spec Standard

Product data:

Product Type:	Mass Spec Standards
Description:	MSN MS Standard C13 and N15-labeled recombinant protein (NP_002435)
Species:	Human
Expression Host:	HEK293
Expression cDNA Clone or AA Sequence:	RC205674
Predicted MW:	67.8 kDa
Protein Sequence:	>RC205674 protein sequence Red=Cloning site Green=Tags(s)

MPKTISVRVTTMDAELEFAIQPNTTGKQLFDQVVKTIGLREVWFFGLQYQDTKGFSTWLKLNKKVTAQDV
RKESPLLKFRKAFYPEDVSEELIQDITQRLFFLQVKEGILNDDIYCPPETAVLLASYAVQSKYGDFNKE
VHKSGYLAGDKLLPQRVLEQHKLNDQWEERIQVWHEEHRGMLREDAVLEYLKIAQDLEMYGVNYFSIKN
KKGSELWLGVDALGLNIYEQNDRLTPKIGFPWSEIRNISFNDKKFVIKPIDKKAPDFVFYAPRLRINKRI
LALCMGNHEL YMRRRKPDTEVQQMKAQAREEKHQKQMERAMLENEKKKREMAEKEKEKIEREKEELMER
LKQIEEQTKKAQQELEEQTRRALELEQERKRAQSEAEKLAKERQEAEEAKEALLQASRDQKKTQEQLALE
MAELTARISQLEMARQKKESEAVEWQQKAQMVQEDLEKTRAELKTAMSTPHVAEPAENEQDEQDENGAEA
SADLRADAMAKDRSEEERTTEAEKNERVQKHLKALTSELANARDESKKTANDMIHAENMRLGRDKYKTLR
QIRQGNTKQRIDEFESM

TRTRPLEQKLI SEEDLAANDILDYKDDDDKV

Tag:	C-Myc/DDK
Purity:	> 80% as determined by SDS-PAGE and Coomassie blue staining
Concentration:	>0.05 µg/µL as determined by microplate BCA method
Labeling Method:	Labeled with [U- ¹³ C ₆ , ¹⁵ N ₄]-L-Arginine and [U- ¹³ C ₆ , ¹⁵ N ₂]-L-Lysine
Buffer:	25 mM Tris-HCl, 100 mM glycine, pH 7.3
Storage:	Store at -80°C. Avoid repeated freeze-thaw cycles.
Stability:	Stable for 3 months from receipt of products under proper storage and handling conditions.
RefSeq:	NP_002435
RefSeq Size:	3981
RefSeq ORF:	1731



[View online »](#)

Synonyms: HEL70; IMD50

Locus ID: 4478

UniProt ID: [P26038](#), [V9HWC0](#)

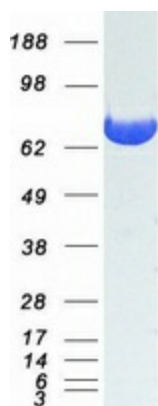
Cytogenetics: Xq12

Summary: Moesin (for membrane-organizing extension spike protein) is a member of the ERM family which includes ezrin and radixin. ERM proteins appear to function as cross-linkers between plasma membranes and actin-based cytoskeletons. Moesin is localized to filopodia and other membranous protrusions that are important for cell-cell recognition and signaling and for cell movement. [provided by RefSeq, Jul 2008]

Protein Families: Druggable Genome

Protein Pathways: Leukocyte transendothelial migration, Regulation of actin cytoskeleton

Product images:



Coomassie blue staining of purified MSN protein (Cat# [TP305674]). The protein was produced from HEK293T cells transfected with MSN cDNA clone (Cat# [RC205674]) using MegaTran 2.0 (Cat# [TT210002]).