

## Product datasheet for PH305673

### IGF2BP2 (NM\_006548) Human Mass Spec Standard

#### Product data:

Product Type:	Mass Spec Standards
Description:	IGF2BP2 MS Standard C13 and N15-labeled recombinant protein (NP_006539)
Species:	Human
Expression Host:	HEK293
Expression cDNA Clone or AA Sequence:	RC205673
Predicted MW:	66 kDa
Protein Sequence:	>RC205673 protein sequence Red=Cloning site Green=Tags(s)

MNKLYIGNLSPAVTADDLRQLFGDRKLPLAGQVLLKSGYAFVDYPDQNWAIETLSGKVELHGKIMEV  
DYSVSKLRSRKIQIRNIPPHLQWEVLDGLLAQYGTVENVEQVNTDTETAVVNVYATREEAKIAMEKLS  
GHQFENYSFKISYIPDEEVSSPSPQRAQRGDHSSREQGHAPGGTSQARQIDFPLRILVPTQFVGAIIIGK  
EGLTIKNITKQTQSRVDIHRKENSAAEKPVTIHATPEGTSEACRMILEIMQKEADETKLAEIPLKILA  
HNGLVGRLLIGKEGRNLKKEHETGKITISSLQDL SIYNPERTITVKGTVEACASAEIEIMKKLREAFEN  
DMLAVNQQANLIPGLNLSALGIFSTGLSVL SPPAGPRGAPPAAPYHPFTTHSGYFSSLYPHHQFGPFP  
HSYPEQEI VNLFIPTQAVGAIIGKKGAHIKQLARFAGASIKIAPAEGPDVSERMVITGPPEAQFKAQGR  
IFGKLLKEENFFNPKEEVKLEAHIRVPSSTAGRVIKGGKTVNELQNL TSAEVI VPRDQTPDENEEVIRI  
IGHFFASQTAQRKIREIVQQVKQEQKYPOGVASQRSK

TRTRPLEQKLISEEDLAANDILDYKDDDDKV

Tag:	C-Myc/DDK
Purity:	> 80% as determined by SDS-PAGE and Coomassie blue staining
Concentration:	>0.05 µg/µL as determined by microplate BCA method
Labeling Method:	Labeled with [U- 13C6, 15N4]-L-Arginine and [U- 13C6, 15N2]-L-Lysine
Buffer:	25 mM Tris-HCl, 100 mM glycine, pH 7.3
Storage:	Store at -80°C. Avoid repeated freeze-thaw cycles.
Stability:	Stable for 3 months from receipt of products under proper storage and handling conditions.
RefSeq:	<a href="#">NP_006539</a>
RefSeq Size:	3676
RefSeq ORF:	1794



[View online »](#)

**Synonyms:** IMP-2; IMP2; VICKZ2

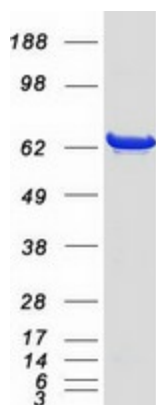
**Locus ID:** 10644

**UniProt ID:** [Q9Y6M1](#)

**Cytogenetics:** 3q27.2

**Summary:** This gene encodes a protein that binds the 5' UTR of insulin-like growth factor 2 (IGF2) mRNA and regulates its translation. It plays an important role in metabolism and variation in this gene is associated with susceptibility to diabetes. Alternative splicing and promoter usage results in multiple transcript variants. Related pseudogenes are found on several chromosomes. [provided by RefSeq, Sep 2016]

### Product images:



Coomassie blue staining of purified IGF2BP2 protein (Cat# [TP305673]). The protein was produced from HEK293T cells transfected with IGF2BP2 cDNA clone (Cat# [RC205673]) using MegaTran 2.0 (Cat# [TT210002]).