

Product datasheet for PH305669

CAMK2B (NM_172081) Human Mass Spec Standard

Product data:

Product Type:	Mass Spec Standards
Description:	CAMK2B MS Standard C13 and N15-labeled recombinant protein (NP_742078)
Species:	Human
Expression Host:	HEK293
Expression cDNA Clone or AA Sequence:	RC205669
Predicted MW:	56.4 kDa
Protein Sequence:	>RC205669 protein sequence Red=Cloning site Green=Tags(s)

MATTVTCTRTFDEYQLYEDIGKGAFSVVRRVCVKLCTGHEYAAKIINTKKLSARDHQKLEREARICRLLKH
SNIVRLHDSISEEGFHYLVFDLVTGGELFEDIVAREYYSEADASHCIQQILEAVLHCHQMVGVVHRDLKPE
NLLLASKCKGAAYKLADFGLAIEVQGDQAWFGFAGTPGYLSPEVLRKEAYGKPVDIWACGVILYILLVG
YPPFWDEDQHKL YQIKAGAYDFPSPEWDTVTPEAKNLINQMLTINPAKRITAEALKHPWVCQRSTVAS
MMHRQETVECLKKFNARRKLGAILTTMLATRNFSAAKSLLNKKADGVKQPQTNSTKNSAAATSPKGTLP
AALESSDSANTTIEDEDAKARKQEIIKTTEQLIEAVNNGDFEAYAKICDPGLTSFEPEALGNLVEGMDFH
RFYFENLLAKNSKPIHTTILNPHVHVIGEDAACIAYIRLTQYIDGQGRPRTSQSEETRVWHRRDGKWQNV
HFHCSGAPVAPLQ

TRTRPLEQKLI SEEDLAANDILDYKDDDDKV

Tag:	C-Myc/DDK
Purity:	> 80% as determined by SDS-PAGE and Coomassie blue staining
Concentration:	>0.05 µg/µL as determined by microplate BCA method
Labeling Method:	Labeled with [U- 13C6, 15N4]-L-Arginine and [U- 13C6, 15N2]-L-Lysine
Buffer:	25 mM Tris-HCl, 100 mM glycine, pH 7.3
Storage:	Store at -80°C. Avoid repeated freeze-thaw cycles.
Stability:	Stable for 3 months from receipt of products under proper storage and handling conditions.
RefSeq:	<u>NP_742078</u>
RefSeq Size:	4097
RefSeq ORF:	1509



[View online »](#)

Synonyms: CAM2; CAMK2; CAMKB; CaMKIIbeta; MRD54

Locus ID: 816

UniProt ID: [Q13554](#)

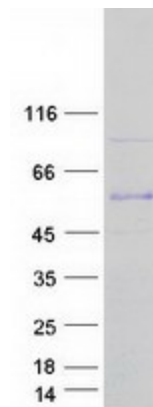
Cytogenetics: 7p13

Summary: The product of this gene belongs to the serine/threonine protein kinase family and to the Ca(2+)/calmodulin-dependent protein kinase subfamily. Calcium signaling is crucial for several aspects of plasticity at glutamatergic synapses. In mammalian cells, the enzyme is composed of four different chains: alpha, beta, gamma, and delta. The product of this gene is a beta chain. It is possible that distinct isoforms of this chain have different cellular localizations and interact differently with calmodulin. Alternative splicing results in multiple transcript variants. [provided by RefSeq, May 2014]

Protein Families: Druggable Genome, Protein Kinase

Protein Pathways: Calcium signaling pathway, ErbB signaling pathway, Glioma, GnRH signaling pathway, Long-term potentiation, Melanogenesis, Neurotrophin signaling pathway, Olfactory transduction, Oocyte meiosis, Wnt signaling pathway

Product images:



Coomassie blue staining of purified CAMK2B protein (Cat# [TP305669]). The protein was produced from HEK293T cells transfected with CAMK2B cDNA clone (Cat# [RC205669]) using MegaTran 2.0 (Cat# [TT210002]).