

## Product datasheet for PH305668

### TIMM10 (NM\_012456) Human Mass Spec Standard

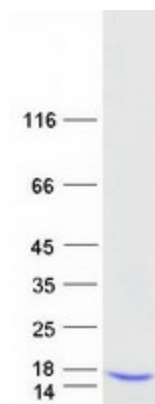
#### Product data:

Product Type:	Mass Spec Standards
Description:	TIMM10 MS Standard C13 and N15-labeled recombinant protein (NP_036588)
Species:	Human
Expression Host:	HEK293
Expression cDNA Clone or AA Sequence:	RC205668
Predicted MW:	10.3 kDa
Protein Sequence:	<p>&gt;RC205668 protein sequence</p> <p>Red=Cloning site Green=Tags(s)</p> <p>MDPLRAQQLAAELEVEEMMADMYNRMTSACHRKCVPPHYKEELSKGESVCLDRCVSKYLDIHERMGKKLT ELSMQDEELMKRVQQSSGPA</p> <p>TRTRPLEQKLISEEDLAANDILDYKDDDDKV</p>
Tag:	C-Myc/DDK
Purity:	> 80% as determined by SDS-PAGE and Coomassie blue staining
Concentration:	>0.05 µg/µL as determined by microplate BCA method
Labeling Method:	Labeled with [U- <sup>13</sup> C <sub>6</sub> , <sup>15</sup> N <sub>4</sub> ]-L-Arginine and [U- <sup>13</sup> C <sub>6</sub> , <sup>15</sup> N <sub>2</sub> ]-L-Lysine
Buffer:	25 mM Tris-HCl, 100 mM glycine, pH 7.3
Storage:	Store at -80°C. Avoid repeated freeze-thaw cycles.
Stability:	Stable for 3 months from receipt of products under proper storage and handling conditions.
RefSeq:	<a href="#">NP_036588</a>
RefSeq Size:	684
RefSeq ORF:	270
Synonyms:	TIM10; TIM10A; TIMM10A
Locus ID:	26519
UniProt ID:	<a href="#">P62072</a>
Cytogenetics:	11q12.1


[View online »](#)

**Summary:**

The mitochondrial protein encoded by this gene belongs to a family of evolutionarily conserved proteins that are organized in heterooligomeric complexes in the mitochondrial intermembrane space. These proteins mediate the import and insertion of hydrophobic membrane proteins into the mitochondrial inner membrane, functioning as intermembrane space chaperones for the highly insoluble carrier proteins. [provided by RefSeq, Nov 2011]

**Product images:**


Coomassie blue staining of purified TIMM10 protein (Cat# [TP305668]). The protein was produced from HEK293T cells transfected with TIMM10 cDNA clone (Cat# [RC205668]) using MegaTran 2.0 (Cat# [TT210002]).