

## Product datasheet for PH305652

### RPL26L1 (NM\_016093) Human Mass Spec Standard

#### Product data:

Product Type:	Mass Spec Standards
Description:	RPL26L1 MS Standard C13 and N15-labeled recombinant protein (NP_057177)
Species:	Human
Expression Host:	HEK293
Expression cDNA Clone or AA Sequence:	RC205652
Predicted MW:	17.3 kDa
Protein Sequence:	>RC205652 protein sequence <b>Red</b> =Cloning site <b>Green</b> =Tags(s)  MKFNPFVTSDRSKNRKRHFNAPSHVRRKIMSSPLSKELRQKYNVRSMPIRKDDEVQVVRGHYKGQQIGKV VQVYRKKYVYIYIERVQREKANGTTVHVGIHPSKVVITRLKLDKDRKKILERKAKSRQVGKEKGKYKEELI EKMQE  <b>TR</b> TRPLEQKLISEEDLAANDILDYKDDDDKV
Tag:	C-Myc/DDK
Purity:	> 80% as determined by SDS-PAGE and Coomassie blue staining
Concentration:	>0.05 µg/µL as determined by microplate BCA method
Labeling Method:	Labeled with [U- <sup>13</sup> C <sub>6</sub> , <sup>15</sup> N <sub>4</sub> ]-L-Arginine and [U- <sup>13</sup> C <sub>6</sub> , <sup>15</sup> N <sub>2</sub> ]-L-Lysine
Buffer:	25 mM Tris-HCl, 100 mM glycine, pH 7.3
Storage:	Store at -80°C. Avoid repeated freeze-thaw cycles.
Stability:	Stable for 3 months from receipt of products under proper storage and handling conditions.
RefSeq:	<a href="#">NP_057177</a>
RefSeq Size:	723
RefSeq ORF:	435
Synonyms:	RPL26P1
Locus ID:	51121
UniProt ID:	<a href="#">Q9UNX3</a>



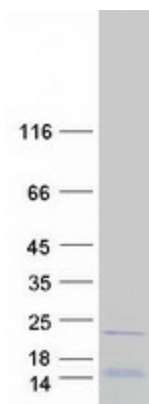
[View online »](#)

Cytogenetics: 5q35.1

Summary: This gene encodes a protein that shares high sequence similarity with ribosomal protein L26. Alternative splicing results in multiple transcript variants encoding the same protein. [provided by RefSeq, Dec 2015]

Protein Pathways: Ribosome

### Product images:



Coomassie blue staining of purified RPL26L1 protein (Cat# [TP305652]). The protein was produced from HEK293T cells transfected with RPL26L1 cDNA clone (Cat# [RC205652]) using MegaTran 2.0 (Cat# [TT210002]).