

## Product datasheet for PH305645

### ASRGL1 (NM\_025080) Human Mass Spec Standard

#### Product data:

Product Type:	Mass Spec Standards
Description:	ASRGL1 MS Standard C13 and N15-labeled recombinant protein (NP_079356)
Species:	Human
Expression Host:	HEK293
Expression cDNA Clone or AA Sequence:	RC205645
Predicted MW:	31.9 kDa
Protein Sequence:	>RC205645 representing NM_025080 Red=Cloning site Green=Tags(s)  MNPVVVHGGGAGPISKDRKERVHQGMVRAATVGYGILREGGSAVDAVEGAVVALEDDPEFNAGCGSVLN TNGEVEMDASIMDGKDL SAGAVSAVQCIANPIKLARLVMEKTPHCFLTDQGAAQFAAAMGVPEIPGEKLV TERNKKRLEKEKHEKGAQKTDQCQNLGTVGAVALDCKGNVAYATSTGGIVNKMVGRVGDSPCLGAGGYAD NDIGAVSTTGHGESILKVNLRLLTFHIEQGKTVEEAADLSLGYMKSrvKGLGGLIVVSKTGDWVAKWTS TSMPWAAAKDGKLFHGIDPDDTTITDLP  TRTRPLEQKLISEEDLAANDILDYKDDDDKV
Tag:	C-Myc/DDK
Purity:	> 80% as determined by SDS-PAGE and Coomassie blue staining
Concentration:	>0.05 µg/µL as determined by microplate BCA method
Labeling Method:	Labeled with [U- <sup>13</sup> C <sub>6</sub> , <sup>15</sup> N <sub>4</sub> ]-L-Arginine and [U- <sup>13</sup> C <sub>6</sub> , <sup>15</sup> N <sub>2</sub> ]-L-Lysine
Buffer:	25 mM Tris-HCl, 100 mM glycine, pH 7.3
Storage:	Store at -80°C. Avoid repeated freeze-thaw cycles.
Stability:	Stable for 3 months from receipt of products under proper storage and handling conditions.
RefSeq:	<u><a href="#">NP_079356</a></u>
RefSeq Size:	1332
RefSeq ORF:	924
Synonyms:	ALP; ALP1; CRASH
Locus ID:	80150



[View online »](#)

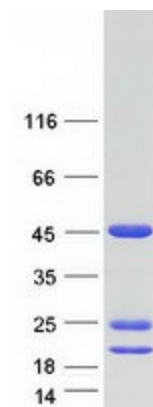
UniProt ID: [Q7L266](#), [A0A024R573](#)

Cytogenetics: 11q12.3

**Summary:** Has both L-asparaginase and beta-aspartyl peptidase activity. May be involved in the production of L-aspartate, which can act as an excitatory neurotransmitter in some brain regions. Is highly active with L-Asp beta-methyl ester. Besides, has catalytic activity toward beta-aspartyl dipeptides and their methyl esters, including beta-L-Asp-L-Phe, beta-L-Asp-L-Phe methyl ester (aspartame), beta-L-Asp-L-Ala, beta-L-Asp-L-Leu and beta-L-Asp-L-Lys. Does not have aspartylglucosaminidase activity and is inactive toward GlcNAc-L-Asn. Likewise, has no activity toward glutamine.[UniProtKB/Swiss-Prot Function]

**Protein Families:** Protease

### Product images:



Coomassie blue staining of purified ASRGL1 protein (Cat# [TP305645]). The protein was produced from HEK293T cells transfected with ASRGL1 cDNA clone (Cat# [RC205645]) using MegaTran 2.0 (Cat# [TT210002]).