

## Product datasheet for PH305641

### CDC25C (NM\_001790) Human Mass Spec Standard

#### Product data:

Product Type:	Mass Spec Standards
Description:	CDC25C MS Standard C13 and N15-labeled recombinant protein (NP_001781)
Species:	Human
Expression Host:	HEK293
Expression cDNA Clone or AA Sequence:	RC205641
Predicted MW:	53.3 kDa
Protein Sequence:	>RC205641 protein sequence Red=Cloning site Green=Tags(s)

MSTELFSSTREEGSSGSGPSFRSNQRKMLNLLLRDTSFTVCPDVPRTVPVGKFLGDSANLSILSGGTPKC  
CLDLSNLSSGEITATQLTTSADLDETGHLDSGLQEVHLAGMNHQHLMKCSPAQLLCSTPNGLDRGHRK  
RDAMCSSSANKENDNGNLVDSEMKYLGSPITTVPKLDKNPNLGEDQAEESI~~DELMEFSLKDQEA~~KVSRSG  
LYRSPSPENLNRPKQVEKFKDNTIPDKVKKKYFSGQGKLRKGLCLKKTVSLCDITITQMLEEDSNQG  
HLIGDFSKVICALPTVSGKHQDLKYVNPETVAALLSGKFQGLIEKFYVIDCRYPYEYLGGHIQGALNLYSQ  
EELFNFLKKPIVPLDTQKRIIIVFHCEFSSEGRPMCRCLREEDRSLNQYPALYPPELYILKGGYRDF  
PEYMELCEPQSYCPMHQDHKTELLRCRSQSKVQEGERQLREQIALLVKDMSP

TRTRPLEQKLISEEDLAANDILDYKDDDDKV

Tag:	C-Myc/DDK
Purity:	> 80% as determined by SDS-PAGE and Coomassie blue staining
Concentration:	>0.05 µg/µL as determined by microplate BCA method
Labeling Method:	Labeled with [U- <sup>13</sup> C <sub>6</sub> , <sup>15</sup> N <sub>4</sub> ]-L-Arginine and [U- <sup>13</sup> C <sub>6</sub> , <sup>15</sup> N <sub>2</sub> ]-L-Lysine
Buffer:	25 mM Tris-HCl, 100 mM glycine, pH 7.3
Storage:	Store at -80°C. Avoid repeated freeze-thaw cycles.
Stability:	Stable for 3 months from receipt of products under proper storage and handling conditions.
RefSeq:	<u>NP_001781</u>
RefSeq Size:	2191
RefSeq ORF:	1419
Synonyms:	CDC25; PPP1R60



[View online »](#)

Locus ID: 995

UniProt ID: [P30307](#)

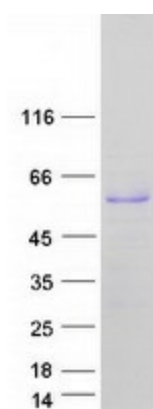
Cytogenetics: 5q31.2

**Summary:** This gene encodes a conserved protein that plays a key role in the regulation of cell division. The encoded protein directs dephosphorylation of cyclin B-bound CDC2 and triggers entry into mitosis. It also suppresses p53-induced growth arrest. Multiple alternatively spliced transcript variants of this gene have been described. [provided by RefSeq, Dec 2015]

**Protein Families:** Druggable Genome, Phosphatase, Stem cell - Pluripotency

**Protein Pathways:** Cell cycle, Oocyte meiosis, Progesterone-mediated oocyte maturation

### Product images:



Coomassie blue staining of purified CDC25C protein (Cat# [TP305641]). The protein was produced from HEK293T cells transfected with CDC25C cDNA clone (Cat# [RC205641]) using MegaTran 2.0 (Cat# [TT210002]).