

## Product datasheet for PH305633

### KCTD6 (NM\_153331) Human Mass Spec Standard

#### Product data:

Product Type:	Mass Spec Standards
Description:	KCTD6 MS Standard C13 and N15-labeled recombinant protein (NP_699162)
Species:	Human
Expression Host:	HEK293
Expression cDNA Clone or AA Sequence:	RC205633
Predicted MW:	27.6 kDa
Protein Sequence:	>RC205633 protein sequence Red=Cloning site Green=Tags(s)  MDNGDWGYMMDPVTNLNVGGHLYTTSLLTRYPDSSMLGAMFGGDFPTARDPQGNFYIDRDGPLFRYVLN FLRTSELTPLDFKEFDLLRKEADFYQIEPLIQCLNDPKPLYPMDTFEEVVELSSTRKLSKYSNPVAVII TQLTITTKVHSLLEGISNYFTKWNKHMDTRDCQVSFTFGPCDYHQEVSLRVHLMYITKQGFTIRNTRV HHMSERANENTVEHNWTFCLARKTDD  SGPTRTRPLEQKLI SEEDLAANDILDYKDDDDKV
Tag:	C-Myc/DDK
Purity:	> 80% as determined by SDS-PAGE and Coomassie blue staining
Concentration:	>0.05 µg/µL as determined by microplate BCA method
Labeling Method:	Labeled with [U- <sup>13</sup> C <sub>6</sub> , <sup>15</sup> N <sub>4</sub> ]-L-Arginine and [U- <sup>13</sup> C <sub>6</sub> , <sup>15</sup> N <sub>2</sub> ]-L-Lysine
Buffer:	25 mM Tris-HCl, 100 mM glycine, pH 7.3
Storage:	Store at -80°C. Avoid repeated freeze-thaw cycles.
Stability:	Stable for 3 months from receipt of products under proper storage and handling conditions.
RefSeq:	<a href="#">NP_699162</a>
RefSeq Size:	1840
RefSeq ORF:	711
Synonyms:	KCASH3
Locus ID:	200845
UniProt ID:	<a href="#">Q8NC69</a>



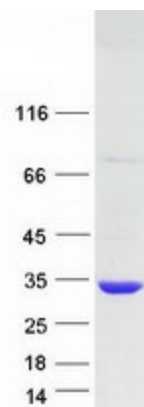
[View online »](#)

Cytogenetics: 3p14.3

**Summary:** Probable substrate-specific adapter of a BCR (BTB-CUL3-RBX1) E3 ubiquitin-protein ligase complex mediating the ubiquitination and subsequent proteasomal degradation of target proteins. Promotes the ubiquitination of HDAC1; the function seems to depend on KCTD11:KCTD6 oligomerization. Can function as antagonist of the Hedgehog pathway by affecting the nuclear transfer of transcription factor GLI1; the function probably occurs via HDAC1 down-regulation, keeping GLI1 acetylated and inactive. Inhibits cell growth and tumorigenicity of medulloblastoma (MDB) (PubMed:21472142). Involved in regulating protein levels of ANK1 isoform Mu17 probably implicating CUL3-dependent proteasomal degradation (PubMed:22573887).[UniProtKB/Swiss-Prot Function]

Protein Families: Ion Channels: Other

### Product images:



Coomassie blue staining of purified KCTD6 protein (Cat# [TP305633]). The protein was produced from HEK293T cells transfected with KCTD6 cDNA clone (Cat# [RC205633]) using MegaTran 2.0 (Cat# [TT210002]).