

## Product datasheet for PH305627

### Prolactin (PRL) (NM\_000948) Human Mass Spec Standard

#### Product data:

Product Type:	Mass Spec Standards
Description:	PRL MS Standard C13 and N15-labeled recombinant protein (NP_000939)
Species:	Human
Expression Host:	HEK293
Expression cDNA Clone or AA Sequence:	RC205627
Predicted MW:	25.9 kDa
Protein Sequence:	>RC205627 protein sequence Red=Cloning site Green=Tags(s)  MNIKGSPWKGSLLLLLVSNLLLCQSVAPLPICPGGAARCQVTLRDLFDRAVVLSHYIHNLSSEMFSEFDK RYTHGRGFITKAINSCHTSSLATPEDKEQAQQMNQKDFLSLIVSILRSWNEPLYHLVTEVRGMQEAPPAI LSKAVEIEEQTKRLLEGMELIVSQVHPETKENEIYPVWSGLPSLQMADEESRLSAYYNLLHCLRRDSHKI DNYLKKLKCRIIHNNNC  TRTRPLEQKLI SEEDLAANDILDYKDDDDKV
Tag:	C-Myc/DDK
Purity:	> 80% as determined by SDS-PAGE and Coomassie blue staining
Concentration:	>0.05 µg/µL as determined by microplate BCA method
Labeling Method:	Labeled with [U- 13C6, 15N4]-L-Arginine and [U- 13C6, 15N2]-L-Lysine
Buffer:	25 mM Tris-HCl, 100 mM glycine, pH 7.3
Storage:	Store at -80°C. Avoid repeated freeze-thaw cycles.
Stability:	Stable for 3 months from receipt of products under proper storage and handling conditions.
RefSeq:	<a href="#">NP_000939</a>
RefSeq Size:	1371
RefSeq ORF:	681
Synonyms:	GHA1
Locus ID:	5617
UniProt ID:	<a href="#">P01236_Q5THQ0</a>



[View online »](#)

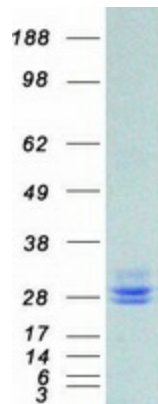
**Cytogenetics:** 6p22.3

**Summary:** This gene encodes the anterior pituitary hormone prolactin. This secreted hormone is a growth regulator for many tissues, including cells of the immune system. It may also play a role in cell survival by suppressing apoptosis, and it is essential for lactation. Alternative splicing results in multiple transcript variants that encode the same protein. [provided by RefSeq, Aug 2011]

**Protein Families:** Druggable Genome, Secreted Protein

**Protein Pathways:** Cytokine-cytokine receptor interaction, Jak-STAT signaling pathway, Neuroactive ligand-receptor interaction

### Product images:



Coomassie blue staining of purified PRL protein (Cat# [TP305627]). The protein was produced from HEK293T cells transfected with PRL cDNA clone (Cat# [RC205627]) using MegaTran 2.0 (Cat# [TT210002]).