

Product datasheet for PH305624

TMEM59 (NM_004872) Human Mass Spec Standard

Product data:

Product Type:	Mass Spec Standards
Description:	TMEM59 MS Standard C13 and N15-labeled recombinant protein (NP_004863)
Species:	Human
Expression Host:	HEK293
Expression cDNA Clone or AA Sequence:	RC205624
Predicted MW:	36.3 kDa
Protein Sequence:	>RC205624 protein sequence Red=Cloning site Green=Tags(s) MAAPKGS LWRTQLGLPPLLLLTMALAGGSGTASAEAFDSVLGDTASCHRACQLTYPLHTYPKEEELYAC QRGCR LFSICQFVDDGIDLNR TKLECESACTEAYSQSDEQYACHLGCQNQLPFAELRQEQLMSLMPKMHL LFPLTLVRSFWSMMDSAQS F ITSSWTFYLQADDGKIVIFQSKPEIQYAPHLEQEPTNLRESSLSKMSSD LQMRNSQAHRNFLEDGESDGLRCLSLNSGWILTTTLVLSVMVLLWICCATVATAVEQYVPSEKLSIYGD LEFMNEQKLNRYPASSLVVRSKTEDHEEAGPLPTKVNLAHSEI TRTRPLEQKLI SEEDLAANDILDYKDDDDKV
Tag:	C-Myc/DDK
Purity:	> 80% as determined by SDS-PAGE and Coomassie blue staining
Concentration:	>0.05 µg/µL as determined by microplate BCA method
Labeling Method:	Labeled with [U- ¹³ C ₆ , ¹⁵ N ₄]-L-Arginine and [U- ¹³ C ₆ , ¹⁵ N ₂]-L-Lysine
Buffer:	25 mM Tris-HCl, 100 mM glycine, pH 7.3
Storage:	Store at -80°C. Avoid repeated freeze-thaw cycles.
Stability:	Stable for 3 months from receipt of products under proper storage and handling conditions.
RefSeq:	NP_004863
RefSeq Size:	1709
RefSeq ORF:	972
Synonyms:	C1orf8; DCF1; HSPC001; PRO195; UNQ169
Locus ID:	9528



[View online »](#)

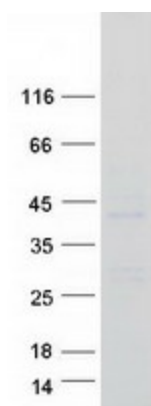
UniProt ID: [Q9BXS4](#)

Cytogenetics: 1p32.3

Summary: This gene encodes a protein shown to regulate autophagy in response to bacterial infection. This protein may also regulate the retention of amyloid precursor protein (APP) in the Golgi apparatus through its control of APP glycosylation. Overexpression of this protein has been found to promote apoptosis in a glioma cell line. Alternative splicing results in multiple transcript variants. [provided by RefSeq, Feb 2015]

Protein Families: Transmembrane

Product images:



Coomassie blue staining of purified TMEM59 protein (Cat# [TP305624]). The protein was produced from HEK293T cells transfected with TMEM59 cDNA clone (Cat# [RC205624]) using MegaTran 2.0 (Cat# [TT210002]).