

Product datasheet for PH305620

Ribonuclease A (RNASE1) (NM_198235) Human Mass Spec Standard

Product data:

Product Type:	Mass Spec Standards
Description:	RNASE1 MS Standard C13 and N15-labeled recombinant protein (NP_937878)
Species:	Human
Expression Host:	HEK293
Expression cDNA Clone or AA Sequence:	RC205620
Predicted MW:	17.6 kDa
Protein Sequence:	>RC205620 protein sequence Red=Cloning site Green=Tags(s) MALEKSLVRLLLLVLIILLVVGWVQPSLGKESRAKKFQRQHMSDSSPSSSSTYCNQMRRRNMTQGRCKP VNTFVHEPLVDVQNVCFQEKVTCKNGQNCYKSNSSMHIIDCRLTNGSRYPNCAVRTSPKERHII VACEG SPYVYPVHFDAVEDST TRTRPLEQKLI SEEDLAANDILDYKDDDDKV
Tag:	C-Myc/DDK
Purity:	> 80% as determined by SDS-PAGE and Coomassie blue staining
Concentration:	>0.05 µg/µL as determined by microplate BCA method
Labeling Method:	Labeled with [U- 13C6, 15N4]-L-Arginine and [U- 13C6, 15N2]-L-Lysine
Buffer:	25 mM Tris-HCl, 100 mM glycine, pH 7.3
Storage:	Store at -80°C. Avoid repeated freeze-thaw cycles.
Stability:	Stable for 3 months from receipt of products under proper storage and handling conditions.
RefSeq:	<u>NP_937878</u>
RefSeq Size:	903
RefSeq ORF:	468
Synonyms:	RAC1; RIB1; RNS1
Locus ID:	6035
UniProt ID:	<u>P07998</u> , <u>W0UUV93</u>



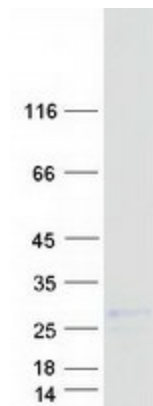
[View online »](#)

Cytogenetics: 14q11.2

Summary: This gene encodes a member of the pancreatic-type of secretory ribonucleases, a subset of the ribonuclease A superfamily. The encoded endonuclease cleaves internal phosphodiester RNA bonds on the 3'-side of pyrimidine bases. It prefers poly(C) as a substrate and hydrolyzes 2',3'-cyclic nucleotides, with a pH optimum near 8.0. The encoded protein is monomeric and more commonly acts to degrade ds-RNA over ss-RNA. Alternative splicing occurs at this locus and four transcript variants encoding the same protein have been identified. [provided by RefSeq, Jul 2008]

Protein Families: Secreted Protein, Transmembrane

Product images:



Coomassie blue staining of purified RNASE1 protein (Cat# [TP305620]). The protein was produced from HEK293T cells transfected with RNASE1 cDNA clone (Cat# [RC205620]) using MegaTran 2.0 (Cat# [TT210002]).