

Product datasheet for PH305614

COMMD1 (NM_152516) Human Mass Spec Standard

Product data:

Product Type:	Mass Spec Standards
Description:	COMMD1 MS Standard C13 and N15-labeled recombinant protein (NP_689729)
Species:	Human
Expression Host:	HEK293
Expression cDNA Clone or AA Sequence:	RC205614
Predicted MW:	21.2 kDa
Protein Sequence:	>RC205614 protein sequence Red=Cloning site Green=Tags(s) MAAGELEGGKPLSGLLNALAQDTFHGYPGITEELLRSQLYPEVPPPEEFRPFLAKMRGILKSIASADMDFN QLEAFLTAQTKKQGGITSDQAAVISKFWKSHKTKIRESLMNQSRWNSGLRGLSWRVLDGKSQSRHSAQIHT PVAIIIELELGKYGQSEFLCLEFDEVKNVQILKTLSEVEESISTLISQPN TRTRPLEQKLI SEEDLAANDILDYKDDDDKV
Tag:	C-Myc/DDK
Purity:	> 80% as determined by SDS-PAGE and Coomassie blue staining
Concentration:	>0.05 µg/µL as determined by microplate BCA method
Labeling Method:	Labeled with [U- 13C6, 15N4]-L-Arginine and [U- 13C6, 15N2]-L-Lysine
Buffer:	25 mM Tris-HCl, 100 mM glycine, pH 7.3
Storage:	Store at -80°C. Avoid repeated freeze-thaw cycles.
Stability:	Stable for 3 months from receipt of products under proper storage and handling conditions.
RefSeq:	NP_689729
RefSeq Size:	725
RefSeq ORF:	570
Synonyms:	C2orf5; MURR1
Locus ID:	150684
UniProt ID:	Q8N668

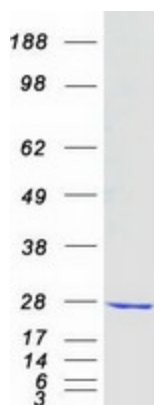


[View online »](#)

Cytogenetics: 2p15

Summary: COMMD1 is a regulator of copper homeostasis, sodium uptake, and NF-kappa-B (see MIM 164011) signaling (de Bie et al., 2005 [PubMed 16267171]).[supplied by OMIM, Sep 2009]

Product images:



Coomassie blue staining of purified COMMD1 protein (Cat# [TP305614]). The protein was produced from HEK293T cells transfected with COMMD1 cDNA clone (Cat# [RC205614]) using MegaTran 2.0 (Cat# [TT210002]).