

Product datasheet for PH305612

SERPINB4 (NM_002974) Human Mass Spec Standard

Product data:

Product Type:	Mass Spec Standards
Description:	SERPINB4 MS Standard C13 and N15-labeled recombinant protein (NP_002965)
Species:	Human
Expression Host:	HEK293
Expression cDNA Clone or AA Sequence:	RC205612
Predicted MW:	44.9 kDa
Protein Sequence:	>RC205612 protein sequence Red=Cloning site Green=Tags(s)
	MNSLSEANTKFMFDLFQQFRKSKENNIFYSPISITSALGMVLLGAKDNTAQQISKVLHFDQVTENTTEKA ATYHVDRSGNVHHQFQKLLTEFNKSTDAYELKIANKLFGEKTYQFLQEYLDAIKKFYQTSVESTDFANAP EESRKKINSWVESQTNEKIKNLFDPDGTIGNDTTLVLVNAIYFKGQWENKFKKENTKEEFWPNKNTYKSV QMMRQYNSFNFALLEDVQAKVLEIPYKGGKDLSMIVLLPNEIDGLQKLEEKLTAEKLMEWTSLQNMRETCV DLHLPRFKMEESYDLKDTLRTMGMVNI FNGDADLSGMTWSHGLSVSKVLHKA FVEVTEEGVEAAAATAVV VVELSSPSTNEEFCCNHPFLFFIRQNKTNSILFYGRFSSP
	TRTRPLEQKLI SEEDLAANDILDYKDDDDKV
Tag:	C-Myc/DDK
Purity:	> 80% as determined by SDS-PAGE and Coomassie blue staining
Concentration:	>0.05 µg/µL as determined by microplate BCA method
Labeling Method:	Labeled with [U- ¹³ C ₆ , ¹⁵ N ₄]-L-Arginine and [U- ¹³ C ₆ , ¹⁵ N ₂]-L-Lysine
Buffer:	25 mM Tris-HCl, 100 mM glycine, pH 7.3
Storage:	Store at -80°C. Avoid repeated freeze-thaw cycles.
Stability:	Stable for 3 months from receipt of products under proper storage and handling conditions.
RefSeq:	<u>NP_002965</u>
RefSeq Size:	1787
RefSeq ORF:	1170
Synonyms:	LEUPIN; PI11; SCCA-2; SCCA1; SCCA2
Locus ID:	6318



[View online »](#)

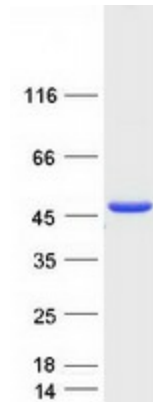
UniProt ID: [P48594](#)

Cytogenetics: 18q21.33

Summary: The protein encoded by this gene is a member of the serpin family of serine protease inhibitors. The encoded protein is highly expressed in many tumor cells and can inactivate granzyme M, an enzyme that kills tumor cells. This protein, along with serpin B3, can be processed into smaller fragments that aggregate to form an autoantigen in psoriasis, probably by causing chronic inflammation. [provided by RefSeq, Jan 2017]

Protein Families: Druggable Genome, Secreted Protein

Product images:



Coomassie blue staining of purified SERPINB4 protein (Cat# [TP305612]). The protein was produced from HEK293T cells transfected with SERPINB4 cDNA clone (Cat# [RC205612]) using MegaTran 2.0 (Cat# [TT210002]).