

Product datasheet for PH305602

HACE1 (NM_020771) Human Mass Spec Standard

Product data:

Product Type:	Mass Spec Standards
Description:	HACE1 MS Standard C13 and N15-labeled recombinant protein (NP_065822)
Species:	Human
Expression Host:	HEK293
Expression cDNA Clone or AA Sequence:	RC205602
Predicted MW:	102.2 kDa
Protein Sequence:	>RC205602 representing NM_020771 Red=Cloning site Green=Tags(s)

MERAMEQLNRLTRSLRRARTVELPEDNETAVYTLMPVMADQHRVSSELLSNSKFDVNYAFGRVKRSLH
IAANCGSVECLVLLLKKGANPNYQDISGCTPLHLAARNGQKCKMSKLEYSADVNICNNEGLTAIHWLAV
NGRTELLHDLVQHVSDVDVEDAMGQTALHVACQNGHKTTVQCLLDGADINRPNVSGATPLYFACSHGQR
DTAQILLRLGAKYLPDKNGVTPDLDCVQGGYGETCEVLIQYHPRLFQTI IQMTQNE DLRENMLRQVLEHL
SQQSESQYLKILTSLAEVATTNGHKLLSLSNYDAQMSLLRIVRMFCHVFRIGPSSPSNGIDMGYNGNK
TPRSQVFKPLELLWHSLEWLVL IATELMKNKRDSTEITSILLKQKQDQDAASIPPFPPGPGSYENLS
TGTRESKPDALAGRQEASADCQDVISMATANRLSAVIQAFYMCCSCQMPPGMTSPRFIEFVCKHDEVLKCF
VNRNPKIIFDHFHFLLECEPELMSRFMHI IKAQPFKDRCEWFYEHLHSGQPDSMVRPVENLILLVHRD
SIFRSSCEVVSKANCAKLKQGI AVRFHGEEGMQGVVREWF DILSNEIVNPDYALFTQSADGTTFPNSN
SYVNPDLNYFRFAGQILGLALNHRQLVNIYFTRSFYKHILGIPVNYQDVASIDPEYAKNLQWILDNDIS
DLGLELTF SVETDVF GAMEEVPLKPGGGSILVTQNNKAEYVQLVTELRMTRAIQPQINAF LQGFHMFIPP
SLIQLFDEYELELLL SGMPEIDVSDWIKNTEYTSGYEREDPVIQWFWEVVEDITQEERVLLLQFVTGSSR
VPHGGFANIMGSGLQNF TIAAVPYTPNLLPTSSTCINMLKLPEYPSKEILKDRLLVALHCGSYGYTMA

TRTRPLEQKLI SEEDLAANDILDYKDDDDKV

Tag:	C-Myc/DDK
Purity:	> 80% as determined by SDS-PAGE and Coomassie blue staining
Concentration:	>0.05 µg/µL as determined by microplate BCA method
Labeling Method:	Labeled with [U- ¹³ C ₆ , ¹⁵ N ₄]-L-Arginine and [U- ¹³ C ₆ , ¹⁵ N ₂]-L-Lysine
Buffer:	25 mM Tris-HCl, 100 mM glycine, pH 7.3
Storage:	Store at -80°C. Avoid repeated freeze-thaw cycles.
Stability:	Stable for 3 months from receipt of products under proper storage and handling conditions.



[View online »](#)

RefSeq: [NP_065822](#)

RefSeq Size: 4576

RefSeq ORF: 2727

Synonyms: SPPRS

Locus ID: 57531

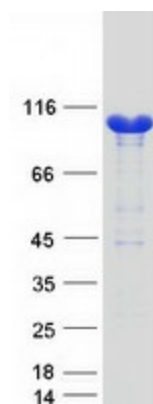
UniProt ID: [Q8IYU2](#)

Cytogenetics: 6q16.3

Summary: This gene encodes a HECT domain and ankyrin repeat-containing ubiquitin ligase. The encoded protein is involved in specific tagging of target proteins, leading to their subcellular localization or proteasomal degradation. The protein is a potential tumor suppressor and is involved in the pathophysiology of several tumors, including Wilm's tumor. [provided by RefSeq, Mar 2016]

Protein Families: Druggable Genome

Product images:



Coomassie blue staining of purified HACE1 protein (Cat# [TP305602]). The protein was produced from HEK293T cells transfected with HACE1 cDNA clone (Cat# [RC205602]) using MegaTran 2.0 (Cat# [TT210002]).