

Product datasheet for PH305598

LIN7 (LIN7B) (NM_022165) Human Mass Spec Standard

Product data:

Product Type:	Mass Spec Standards
Description:	LIN7B MS Standard C13 and N15-labeled recombinant protein (NP_071448)
Species:	Human
Expression Host:	HEK293
Expression cDNA Clone or AA Sequence:	RC205598
Predicted MW:	22.9 kDa
Protein Sequence:	>RC205598 protein sequence Red=Cloning site Green=Tags(s) MAALVEPLGLERDVSRVAVELLERLQRSGELPPQKLQALQRVLQSRFCSAIREVYEQLYDTLDTGSAEIR AHATAKATVAAFTASEGHAHPRVVELPKTDEGLGFNIMGKQNSPIYISRVIPGGVADRHGGLKRGDQL LSVNGVSVEGEQHEKAVELLKAAQGSVKLVVRYTPRVLEEMEARFEKMRSARRRQHQSYSSLESRG TRTRPLEQKLI SEEDLAANDILDYKDDDDKV
Tag:	C-Myc/DDK
Purity:	> 80% as determined by SDS-PAGE and Coomassie blue staining
Concentration:	>0.05 µg/µL as determined by microplate BCA method
Labeling Method:	Labeled with [U- ¹³ C ₆ , ¹⁵ N ₄]-L-Arginine and [U- ¹³ C ₆ , ¹⁵ N ₂]-L-Lysine
Buffer:	25 mM Tris-HCl, 100 mM glycine, pH 7.3
Storage:	Store at -80°C. Avoid repeated freeze-thaw cycles.
Stability:	Stable for 3 months from receipt of products under proper storage and handling conditions.
RefSeq:	NP_071448
RefSeq Size:	755
RefSeq ORF:	621
Synonyms:	LIN-7B; MALS-2; MALS2; VELI2
Locus ID:	64130
UniProt ID:	Q9HAP6



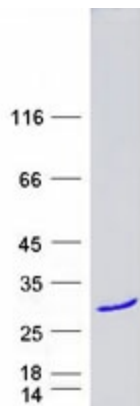
[View online »](#)

Cytogenetics: 19q13.33

Summary: Plays a role in establishing and maintaining the asymmetric distribution of channels and receptors at the plasma membrane of polarized cells. Forms membrane-associated multiprotein complexes that may regulate delivery and recycling of proteins to the correct membrane domains. The tripartite complex composed of LIN7 (LIN7A, LIN7B or LIN7C), CASK and APBA1 may have the potential to couple synaptic vesicle exocytosis to cell adhesion in brain. Ensures the proper localization of GRIN2B (subunit 2B of the NMDA receptor) to neuronal postsynaptic density and may function in localizing synaptic vesicles at synapses where it is recruited by beta-catenin and cadherin. Required to localize Kir2 channels, GABA transporter (SLC6A12) and EGFR/ERBB1, ERBB2, ERBB3 and ERBB4 to the basolateral membrane of epithelial cells. May increase the amplitude of ASIC3 acid-evoked currents by stabilizing the channel at the cell surface (By similarity).[UniProtKB/Swiss-Prot Function]

Protein Families: Druggable Genome

Product images:



Coomassie blue staining of purified LIN7B protein (Cat# [TP305598]). The protein was produced from HEK293T cells transfected with LIN7B cDNA clone (Cat# [RC205598]) using MegaTran 2.0 (Cat# [TT210002]).