

Product datasheet for PH305566

SLFNL1 (NM_144990) Human Mass Spec Standard

Product data:

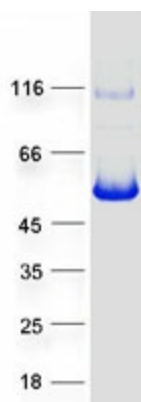
Product Type:	Mass Spec Standards
Description:	SLFNL1 MS Standard C13 and N15-labeled recombinant protein (NP_659427)
Species:	Human
Expression Host:	HEK293
Expression cDNA Clone or AA Sequence:	RC205566
Predicted MW:	45.5 kDa
Protein Sequence:	>RC205566 protein sequence Red=Cloning site Green=Tags(s)
	MTPMKRSVQTQVSEPFMESWGEEESLPELPAEQSLTEYSDLEEAPSAHTLYVGHLPQFSVPVLACLLRDT LERLEMPVAREHIEVRRPRKAYALVQVTVHRDTLASLPWRLQTAL EEHLILKEL AASGKDLLLSEAQGP FSHREEKEEEEEEDSGLSPGSPGSGVPLPTWPTHLPDRPQAQQLQSCQGRPSGVCSDSAIVHQQIVGKD QLFQGAFLGSETRNMEFKRGSGEYLSLAFKHHVRRYVCAFLNSEGGSLLVGVEDSGLVQGIRCSHRDED ARLLVDSILQGFKPQIFPDAYTLTFIPVISTSETSVPLKVIRLTVHTPKAQSQPQLYQTDQGEVFLRRDG SIQGPLSASAIQEWCRQRWLVELGKLEEKMKALMMEKEQLQQQLQHGVPVSTCCVL
	TRTRPLEQKLISEEDLAANDILDYKDDDDKV
Tag:	C-Myc/DDK
Purity:	> 80% as determined by SDS-PAGE and Coomassie blue staining
Concentration:	>0.05 µg/µL as determined by microplate BCA method
Labeling Method:	Labeled with [U- ¹³ C ₆ , ¹⁵ N ₄]-L-Arginine and [U- ¹³ C ₆ , ¹⁵ N ₂]-L-Lysine
Buffer:	25 mM Tris-HCl, 100 mM glycine, pH 7.3
Storage:	Store at -80°C. Avoid repeated freeze-thaw cycles.
Stability:	Stable for 3 months from receipt of products under proper storage and handling conditions.
RefSeq:	<u>NP_659427</u>
RefSeq Size:	2007
RefSeq ORF:	1221
Locus ID:	200172
UniProt ID:	<u>Q499Z3</u> , <u>A0A140VJU6</u>



[View online »](#)

Cytogenetics: 1p34.2

Product images:



Coomassie blue staining of purified SLFNL1 protein (Cat# [TP305566]). The protein was produced from HEK293T cells transfected with SLFNL1 cDNA clone (Cat# [RC205566]) using MegaTran 2.0 (Cat# [TT210002]).