

Product datasheet for PH305562

LDHAL6B (NM_033195) Human Mass Spec Standard

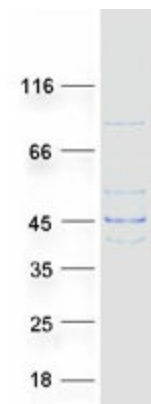
Product data:

Product Type:	Mass Spec Standards
Description:	LDHAL6B MS Standard C13 and N15-labeled recombinant protein (NP_149972)
Species:	Human
Expression Host:	HEK293
Expression cDNA Clone or AA Sequence:	RC205562
Predicted MW:	42 kDa
Protein Sequence:	>RC205562 protein sequence Red=Cloning site Green=Tags(s)
	MSWTVPVVRASQRMSSVGANFLCLGMALCLRQATRIPLNGTWLFTPVSKMATVKSELIERFTSEKPVHHS KVSIIGTGSVGMACAISILLKGLSDELALVDLDEDKLGKGETMDLQHGSPFTKMPNIVCSKDYFVTANSNL VIITAGARQEKGETRLNLVQRNVAIFKLMISSIVQYSPHCKLIIVSNPVDILTYAVKLSAFPKNRIIGS GCNLDTARFRFLIGQKLGHSCHGWILGEHGDSSVPVWGSVNIAGVPLKDLNSDIGTDKPEQWKNVH KEVTATAYEIIKMKGYTSWAIGLSVADL TESILKNLRRHPVSTITKGLYGIDEEVFLSIPCILGENGIT NLIKIKLTPEEEAHLKSAKTLWEIQNKLKL
	TRTRPLEQKLI SEEDLAANDILDYKDDDDKV
Tag:	C-Myc/DDK
Purity:	> 80% as determined by SDS-PAGE and Coomassie blue staining
Concentration:	>0.05 µg/µL as determined by microplate BCA method
Labeling Method:	Labeled with [U- ¹³ C ₆ , ¹⁵ N ₄]-L-Arginine and [U- ¹³ C ₆ , ¹⁵ N ₂]-L-Lysine
Buffer:	25 mM Tris-HCl, 100 mM glycine, pH 7.3
Storage:	Store at -80°C. Avoid repeated freeze-thaw cycles.
Stability:	Stable for 3 months from receipt of products under proper storage and handling conditions.
RefSeq:	<u>NP_149972</u>
RefSeq Size:	1773
RefSeq ORF:	1143
Synonyms:	LDH6B; LDHAL6; LDHL
Locus ID:	92483



[View online »](#)

UniProt ID: [Q9BYZ2](#), [A0A140VJM9](#)
Cytogenetics: 15q22.2
Protein Pathways: Cysteine and methionine metabolism, Glycolysis / Gluconeogenesis, Metabolic pathways, Propanoate metabolism, Pyruvate metabolism

Product images:

Coomassie blue staining of purified LDHAL6B protein (Cat# [TP305562]). The protein was produced from HEK293T cells transfected with LDHAL6B cDNA clone (Cat# [RC205562]) using MegaTran 2.0 (Cat# [TT210002]).