

## Product datasheet for PH305557

### TKTL2 (NM\_032136) Human Mass Spec Standard

#### Product data:

Product Type:	Mass Spec Standards
Description:	TKTL2 MS Standard C13 and N15-labeled recombinant protein (NP_115512)
Species:	Human
Expression Host:	HEK293
Expression cDNA Clone or AA Sequence:	RC205557
Predicted MW:	67.9 kDa
Protein Sequence:	>RC205557 protein sequence Red=Cloning site Green=Tags(s)

MMANDAKPDVKTVQVLRDTANRLRIHSIRATCASGSGQLTSCCSAAEVSVLFFHTMKYKQTDPEHPDND  
RFILSRGHAAPILYAAWVEVGDISEDLLNLRKLHSDLERHPTPRLPFVDVATGSLGQGLGTACGMAYTG  
KYLDKASYRVFCLMGDGESSEGSVWEAF AFASHYNLDNLVAVFDVNRLGQSGPAPLEHGADIYQNCCEAF  
GWNTYLVDGHDVEALCQAFWQASQVKNKPTAIVAKTFKGRGIPNIEDAENWHGKPVKERADAIVKLI  
QIQTNENLIPKSPVEDSPQISVTDIKMTSPHAYKVGDKIATQKTYGLALAKLGRANERIVLSGDTMNST  
FSEIFRKEHPERFIECIIAEQNMVSVALGCATRGRITIAFAGAF AAFTRAFDQLRMGAISQANINLIGSH  
CGVSTGEDGVSQMALEDLAMFRSIPNCTVFYPSDAISTEHAIIYLAANTKGMCFIRTSQPETA VIYTPQEN  
FEIGQAKVVRHGVNDKVTVIGAVTLHEALEAADHLSQQGISVVRIDPFTIKPLDAATIISAKATGGRV  
ITVEDHYREGGIGEAVCAAVSREPDILVHQLAVSGVPQRGKTSSELLDMFGISTRHIIAAVTLTLMK

TRTRPLEQKLISEEDLAANDILDYKDDDDKV

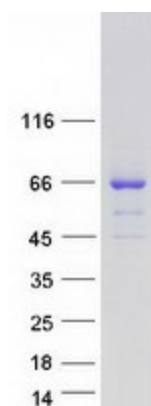
Tag:	C-Myc/DDK
Purity:	> 80% as determined by SDS-PAGE and Coomassie blue staining
Concentration:	>0.05 µg/µL as determined by microplate BCA method
Labeling Method:	Labeled with [U- <sup>13</sup> C <sub>6</sub> , <sup>15</sup> N <sub>4</sub> ]-L-Arginine and [U- <sup>13</sup> C <sub>6</sub> , <sup>15</sup> N <sub>2</sub> ]-L-Lysine
Buffer:	25 mM Tris-HCl, 100 mM glycine, pH 7.3
Storage:	Store at -80°C. Avoid repeated freeze-thaw cycles.
Stability:	Stable for 3 months from receipt of products under proper storage and handling conditions.
RefSeq:	<a href="#">NP_115512</a>
RefSeq Size:	2837
RefSeq ORF:	1878



[View online »](#)

Locus ID:	84076
UniProt ID:	<a href="#">Q9H0I9</a> , <a href="#">A0A140VKC2</a>
Cytogenetics:	4q32.2
Summary:	Plays an essential role in total transketolase activity and cell proliferation in cancer cells; after transfection with anti-TKTL1 siRNA, total transketolase activity dramatically decreases and proliferation was significantly inhibited in cancer cells. Plays a pivotal role in carcinogenesis. [UniProtKB/Swiss-Prot Function]
Protein Pathways:	Metabolic pathways, Pentose phosphate pathway

### Product images:



Coomassie blue staining of purified TKTL2 protein (Cat# [TP305557]). The protein was produced from HEK293T cells transfected with TKTL2 cDNA clone (Cat# [RC205557]) using MegaTran 2.0 (Cat# [TT210002]).