

Product datasheet for PH305543

AKAP associated Sperm Protein (ROPN1L) (NM_031916) Human Mass Spec Standard

Product data:

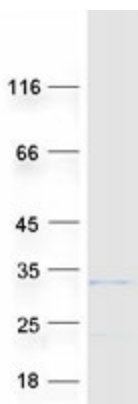
Product Type:	Mass Spec Standards
Description:	ROPN1L MS Standard C13 and N15-labeled recombinant protein (NP_114122)
Species:	Human
Expression Host:	HEK293
Expression cDNA Clone or AA Sequence:	RC205543
Predicted MW:	26.2 kDa
Protein Sequence:	<p>>RC205543 protein sequence</p> <p>Red=Cloning site Green=Tags(s)</p> <p>MPLPDTMFCAQQIHIPPELPDILKQFTKAAIRTQPADVLRWSAGYFSALSRGDPLPVKDRMEMPTATQKT DTGLTQGLLKVLHKQCHHKRYVELTDLEQKWKNLCLPKEKFKALLQLDPCENKIKWINFLALGCSMLGGS LNTALKHLCEILTDDREGGPARIPFKTFSYVYRYLARLSDVSPLETESYLASKENIDARKNGMIGLSD FFFPKRKLLSEIENSEDVGH</p> <p>TRTRPLEQKLISEEDLAANDILDYKDDDDKV</p>
Tag:	C-Myc/DDK
Purity:	> 80% as determined by SDS-PAGE and Coomassie blue staining
Concentration:	>0.05 µg/µL as determined by microplate BCA method
Labeling Method:	Labeled with [U- ¹³ C ₆ , ¹⁵ N ₄]-L-Arginine and [U- ¹³ C ₆ , ¹⁵ N ₂]-L-Lysine
Buffer:	25 mM Tris-HCl, 100 mM glycine, pH 7.3
Storage:	Store at -80°C. Avoid repeated freeze-thaw cycles.
Stability:	Stable for 3 months from receipt of products under proper storage and handling conditions.
RefSeq:	NP_114122
RefSeq Size:	1093
RefSeq ORF:	690
Synonyms:	ASP; RSPH11
Locus ID:	83853
UniProt ID:	Q96C74


[View online »](#)

Cytogenetics: 5p15.2

Summary: This gene encodes a member of the ropporin family. The encoded protein is present in sperm and interacts with A-kinase anchoring protein, AKAP3, through the amphipathic helix region of AKAP3. Alternatively spliced transcript variants have been found for this gene. [provided by RefSeq, Oct 2014]

Product images:



Coomassie blue staining of purified ROPN1L protein (Cat# [TP305543]). The protein was produced from HEK293T cells transfected with ROPN1L cDNA clone (Cat# [RC205543]) using MegaTran 2.0 (Cat# [TT210002]).