

Product datasheet for PH305540

HSDL1 (NM_031463) Human Mass Spec Standard

Product data:

Product Type:	Mass Spec Standards
Description:	HSDL1 MS Standard C13 and N15-labeled recombinant protein (NP_113651)
Species:	Human
Expression Host:	HEK293
Expression cDNA Clone or AA Sequence:	RC205540
Predicted MW:	37 kDa
Protein Sequence:	>RC205540 protein sequence Red=Cloning site Green=Tags(s) MAAVDSFYLLYREIARSCNCYMEALALVGAWYTARKSITVICDFYSLIRLHFIPRLGSRADLIKQYGRWA VVSGATDGIGKAYAEELASRGLNIIISRNEEKLVVAKDIADTYKVETDIIIVADFSSGREIYLPREAL KDKDVGILVNNVGVFYPYPQYFTQLSEDKLWDIINVNIAAASLMVHVLPGMVERKKGAIVTISSGSCCK PTPQLAAFSAKAYLDHFSRALQYEQYASKGIFVQSLIPFYVAASMTAPSNFLHRCSWLVPSPKVYAHHAV STLGISKRTTGYWSHSIQFLFAQYMPPEWLWVGANILNRSRKEALSCTA TRTRPLEQKLISEEDLAANDILDYKDDDDKV
Tag:	C-Myc/DDK
Purity:	> 80% as determined by SDS-PAGE and Coomassie blue staining
Concentration:	>0.05 µg/µL as determined by microplate BCA method
Labeling Method:	Labeled with [U- ¹³ C ₆ , ¹⁵ N ₄]-L-Arginine and [U- ¹³ C ₆ , ¹⁵ N ₂]-L-Lysine
Buffer:	25 mM Tris-HCl, 100 mM glycine, pH 7.3
Storage:	Store at -80°C. Avoid repeated freeze-thaw cycles.
Stability:	Stable for 3 months from receipt of products under proper storage and handling conditions.
RefSeq:	<u>NP_113651</u>
RefSeq Size:	3668
RefSeq ORF:	990
Synonyms:	SDR12C3
Locus ID:	83693



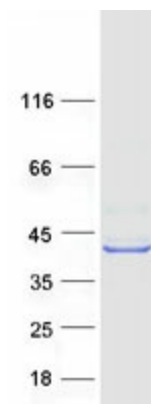
[View online »](#)

UniProt ID: [Q3SXM5](#), [I6L975](#)

Cytogenetics: 16q24.1

Protein Families: Druggable Genome

Product images:



Coomassie blue staining of purified HSDL1 protein (Cat# [TP305540]). The protein was produced from HEK293T cells transfected with HSDL1 cDNA clone (Cat# [RC205540]) using MegaTran 2.0 (Cat# [TT210002]).