

## Product datasheet for PH305535

### RND1 (NM\_014470) Human Mass Spec Standard

#### Product data:

Product Type:	Mass Spec Standards
Description:	RND1 MS Standard C13 and N15-labeled recombinant protein (NP_055285)
Species:	Human
Expression Host:	HEK293
Expression cDNA Clone or AA Sequence:	RC205535
Predicted MW:	26.1 kDa
Protein Sequence:	>RC205535 protein sequence Red=Cloning site Green=Tags(s)  MKERRAPQPVVARCKLVLVGDVQCCKTAMLQVLAKDCYPETYVPTVFENYTACLETEEQRVELSLWDTSG SPYYDNVRPLCYSDSAVLLCFDISRPETVDSALKKWRTEILDYCPSTRVLLIGCKTDLRTDLSTLMELS HQKQAPISYEQGCAIAKQLGAEIYLEGSAFTSEKSIHSIFRTASMLCLNKPSPLPQKSPVRSLSKRLHL PSRSELISSTFKKEKAKSCSIM  TRTRPLEQKLI SEEDLAANDILDYKDDDDKV
Tag:	C-Myc/DDK
Purity:	> 80% as determined by SDS-PAGE and Coomassie blue staining
Concentration:	>0.05 µg/µL as determined by microplate BCA method
Labeling Method:	Labeled with [U- <sup>13</sup> C <sub>6</sub> , <sup>15</sup> N <sub>4</sub> ]-L-Arginine and [U- <sup>13</sup> C <sub>6</sub> , <sup>15</sup> N <sub>2</sub> ]-L-Lysine
Buffer:	25 mM Tris-HCl, 100 mM glycine, pH 7.3
Storage:	Store at -80°C. Avoid repeated freeze-thaw cycles.
Stability:	Stable for 3 months from receipt of products under proper storage and handling conditions.
RefSeq:	<a href="#">NP_055285</a>
RefSeq Size:	1665
RefSeq ORF:	696
Synonyms:	ARHS; RHO6; RHOS
Locus ID:	27289
UniProt ID:	<a href="#">Q92730</a>



[View online »](#)

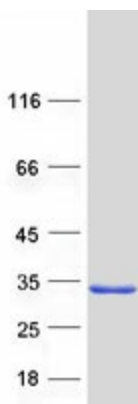
**Cytogenetics:** 12q13.12

**Summary:** This gene encodes a protein that belongs to the Rho GTPase family. Members of this family regulate the organization of the actin cytoskeleton in response to extracellular growth factors. A similar protein in rat interacts with a microtubule regulator to control axon extension. [provided by RefSeq, Apr 2014]

**Protein Families:** Stem cell - Pluripotency

**Protein Pathways:** Axon guidance

### Product images:



Coomassie blue staining of purified RND1 protein (Cat# [TP305535]). The protein was produced from HEK293T cells transfected with RND1 cDNA clone (Cat# [RC205535]) using MegaTran 2.0 (Cat# [TT210002]).