

Product datasheet for PH305518

C2orf65 (M1AP) (NM_138804) Human Mass Spec Standard

Product data:

Product Type:	Mass Spec Standards
Description:	C2orf65 MS Standard C13 and N15-labeled recombinant protein (NP_620159)
Species:	Human
Expression Host:	HEK293
Expression cDNA Clone or AA Sequence:	RC205518
Predicted MW:	59.4 kDa
Protein Sequence:	>RC205518 protein sequence Red=Cloning site Green=Tags(s)

MHPGRTTGKGPSTHTQIDQQPPRLLIVHIALPSWADICTNLCEALQNFFSLACSLMGPSRMSLFSLYMQ
DQHECILPFVQVKGNFARLQTCISELRMLQREGCFRSQGASRLAVEDGLQQFKQYSRHVTTAALTYTS
LEITILTSQPGKEVVKQLEEGDKDLDLARVRRFQVVEVTKGILEHVDSASPVEDTSNDESSILGTDIDLQ
TIDNDIVSMEIFFKAWLHNSGTDQEIHLLSSQCFSNISRPRDNPMCLKCDLQERLLCPSLLAGTADGS
LRMDDPKGDFITLYQMASQSSASHYKLQVIKALKSSGLCESLTYGLPFILRPTSCWQLDWELETNQQHF
HALCHSLLKREWLLLAKGEPGPGHSQRIPASTFYVIMP SHSL TLLVKAVATRELM LPSTFLLPEDPHD
DSLKNVESMLDSLELEPTYNPLHVQSHLYSHLSSYAKPQGRLLHPHWESRAPRKHPCKTGQLQTNRARAT
VAPLPMTVPVGRASKMPAASKSSDAFFLPSEWEKDPSRP

TRTRPLEQKLI SEEDLAANDILDYKDDDDKV

Tag:	C-Myc/DDK
Purity:	> 80% as determined by SDS-PAGE and Coomassie blue staining
Concentration:	>0.05 µg/µL as determined by microplate BCA method
Labeling Method:	Labeled with [U- ¹³ C ₆ , ¹⁵ N ₄]-L-Arginine and [U- ¹³ C ₆ , ¹⁵ N ₂]-L-Lysine
Buffer:	25 mM Tris-HCl, 100 mM glycine, pH 7.3
Storage:	Store at -80°C. Avoid repeated freeze-thaw cycles.
Stability:	Stable for 3 months from receipt of products under proper storage and handling conditions.
RefSeq:	<u>NP_620159</u>
RefSeq Size:	2558
RefSeq ORF:	1590



[View online »](#)

Synonyms: C2orf65; D6Mm5e; SPATA37; SPGF48

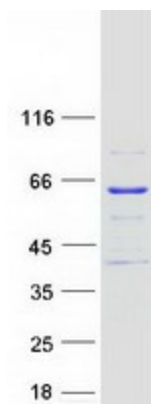
Locus ID: 130951

UniProt ID: [Q8TC57](#)

Cytogenetics: 2p13.1

Summary: This gene encodes a protein that is likely to function in progression of meiosis. A similar protein in mouse plays a role in gametogenesis in both sexes. Alternate splicing results in multiple transcript variants encoding different isoforms. [provided by RefSeq, Jul 2013]

Product images:



Coomassie blue staining of purified M1AP protein (Cat# [TP305518]). The protein was produced from HEK293T cells transfected with M1AP cDNA clone (Cat# [RC205518]) using MegaTran 2.0 (Cat# [TT210002]).