

Product datasheet for PH305515

ADAM32 (NM_145004) Human Mass Spec Standard

Product data:

Product Type:	Mass Spec Standards
Description:	ADAM32 MS Standard C13 and N15-labeled recombinant protein (NP_659441)
Species:	Human
Expression Host:	HEK293
Expression cDNA Clone or AA Sequence:	RC205515
Predicted MW:	87.9 kDa
Protein Sequence:	>RC205515 protein sequence Red=Cloning site Green=Tags(s)

MFRLWLLLAGLCGLLASRPGFQNSLLQIVIPEKIQTNTNDSSEIEYEQISYIIPIDEKLYTVHLKQRYFL
ADNFMIIYLYNQSMNTYSSDIQTQCYYQGNIEGYPDSMVTLSTCSGLRGILQFENVSYGIEPLESAVEFQ
HVLKYLKKNEDNDIAIFIDRSLKEQPMDNIFISEKSEPAVDFPLYLEMHIVVDKTLYDYWGSDSMIVT
NKVIEIVGLANSMTQFKVTIVLSSLELWSDENKISTVGEADELLQKFLWKQSYLNLRPHDIAYLLIYM
DYPRYLGAVFPGTMCITRYSAGVALYPKEITLEAFVAVITQMLALSLGISYDDPKKCQCSESTCIMNPEV
VQSNQVKTFSKSLRSFQNFISNVGVKCLQNKPMQKSPKPVCGNGRLEGNEICDCGTEAQCSPASCCD
FRTCVLKDGAKCYKGLCKKDCQILQSGVECRPKAHPECDIAENCNGSSPECGPDITLINGLSCKNNKFC
YDGDCHDLARCESVFGKSRNAPFACYEEIQSQSDRFGNCGDRNKNKYVFCGWRNLICGRLVCTYPTRK
PFHQENGVDVIYAFVRDSCITVDYKLPRTVDPDLAVKNGSQCDIGRVCVNRECVESRIIKASAHVCSQQC
SGHGVCDSRNKCHCSPGYKPPNCQIRSKGFSIFPEEDMGSIMERASGKTENTWLLGFLIALPILIVTTAI
VLARKQLKKWFAKEEEFPSSSEKSEGSTQTYASQSSSEGSTQTYASQTRSESSQADTSKSKSEDSAEAY
TSRSKSQDSTQTQSSSN

TRTRPLEQKLISEEDLAANDILDYKDDDDKV

Tag:	C-Myc/DDK
Purity:	> 80% as determined by SDS-PAGE and Coomassie blue staining
Concentration:	>0.05 µg/µL as determined by microplate BCA method
Labeling Method:	Labeled with [U- ¹³ C ₆ , ¹⁵ N ₄]-L-Arginine and [U- ¹³ C ₆ , ¹⁵ N ₂]-L-Lysine
Buffer:	25 mM Tris-HCl, 100 mM glycine, pH 7.3
Storage:	Store at -80°C. Avoid repeated freeze-thaw cycles.
Stability:	Stable for 3 months from receipt of products under proper storage and handling conditions.
RefSeq:	NP_659441



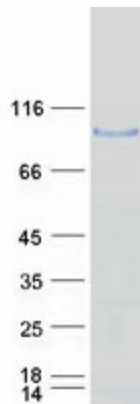
[View online »](#)

RefSeq Size:	2742
RefSeq ORF:	2361
Locus ID:	203102
UniProt ID:	Q8TC27 , A0A140VJD9
Cytogenetics:	8p11.22

Summary: This gene encodes a member of the disintegrin family of membrane-anchored proteins that play a role in diverse biological processes such as brain development, fertilization, tumor development and inflammation. This gene is predominantly expressed in the testis. The encoded protein undergoes proteolytic processing to generate a mature polypeptide comprised of an metalloprotease, disintegrin and epidermal growth factor-like domains. This gene is located in a cluster of other disintegrin and metallopeptidase family genes on chromosome 8. Alternative splicing results in multiple transcript variants encoding different isoforms. [provided by RefSeq, Sep 2015]

Protein Families: Protease, Transmembrane

Product images:



Coomassie blue staining of purified ADAM32 protein (Cat# [TP305515]). The protein was produced from HEK293T cells transfected with ADAM32 cDNA clone (Cat# [RC205515]) using MegaTran 2.0 (Cat# [TT210002]).