

Product datasheet for PH305513

TRUB1 (NM_139169) Human Mass Spec Standard

Product data:

| | |
|---------------------------------------|---|
| Product Type: | Mass Spec Standards |
| Description: | TRUB1 MS Standard C13 and N15-labeled recombinant protein (NP_631908) |
| Species: | Human |
| Expression Host: | HEK293 |
| Expression cDNA Clone or AA Sequence: | RC205513 |
| Predicted MW: | 37.3 kDa |
| Protein Sequence: | >RC205513 protein sequence Red=Cloning site Green=Tags(s) |

MAASEAAVVSSPSLKTDTSPVLETAGTVAAMAATPSARAAAAVVAAAARTGSEARVSKAALATKLLSLSG
VFAVHKPKGPTSSELLNRLKEKLLAEAGMPSPEWTKRKKQTLKIGHGGTLDAAARGVLVVGIGSGTKMLT
SMLSGSKRYTAIGELGKATDLDSTGRVTEEKPYDKITQEDIEGILQKFTGNIMQVPPLYSALKKDGQRL
STLMKRGEVVEAKPARPVTVYISLQKQPPFFTLDVECGGGFYIRSLVSDIGKELSSCANVLELTRTKQ
GPFTLEEHALPEDKWTIDDIAQSLHEHCSSLFPAELALKKSKPESNEQVLSEYITLNEPKREDDVIKTC

TRTRPLEQKLISEEDLAANDILDYKDDDDKV

| | |
|------------------|--|
| Tag: | C-Myc/DDK |
| Purity: | > 80% as determined by SDS-PAGE and Coomassie blue staining |
| Concentration: | >0.05 µg/µL as determined by microplate BCA method |
| Labeling Method: | Labeled with [U- ¹³ C ₆ , ¹⁵ N ₄]-L-Arginine and [U- ¹³ C ₆ , ¹⁵ N ₂]-L-Lysine |
| Buffer: | 25 mM Tris-HCl, 100 mM glycine, pH 7.3 |
| Storage: | Store at -80°C. Avoid repeated freeze-thaw cycles. |
| Stability: | Stable for 3 months from receipt of products under proper storage and handling conditions. |
| RefSeq: | <u>NP_631908</u> |
| RefSeq Size: | 3412 |
| RefSeq ORF: | 1047 |
| Synonyms: | PUS4 |
| Locus ID: | 142940 |



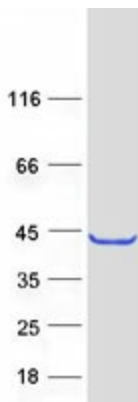
[View online »](#)

UniProt ID: [Q8WWH5](#)

Cytogenetics: 10q25.3

Summary: Pseudouridine is an abundant component of rRNAs and tRNAs and is enzymatically generated by isomerization of uridine by pseudouridine synthase (Zucchini et al., 2003 [PubMed 12736709]).[supplied by OMIM, Mar 2008]

Product images:



Coomassie blue staining of purified TRUB1 protein (Cat# [TP305513]). The protein was produced from HEK293T cells transfected with TRUB1 cDNA clone (Cat# [RC205513]) using MegaTran 2.0 (Cat# [TT210002]).