

Product datasheet for PH305503

NANP (NM_152667) Human Mass Spec Standard

Product data:

Product Type:	Mass Spec Standards
Description:	NANP MS Standard C13 and N15-labeled recombinant protein (NP_689880)
Species:	Human
Expression Host:	HEK293
Expression cDNA Clone or AA Sequence:	RC205503
Predicted MW:	27.8 kDa
Protein Sequence:	>RC205503 protein sequence Red=Cloning site Green=Tags(s) MGLSRVRAVFFDLNLTIDTAGASRRGMLEVIKLLQSKYHYKEEAEIICDKVQVKLSKECFHPYNTCITD LRTSHWEEAIQETKGAANRKLAEECYFLWKSTRLQHMTLAEDVKAMLTRELKVRLLLLTNGDRQTQRE KIEACACQSYFDAVVVGGEQREEKPAPSIFFYCCNLLGVQPGDCVMVGDLTLETDIQGGLNAGLKATVWIN KNGIVPLKSSPVPHYMVSSVLELPAALLQSIDCKVSMST TRTRPLEQKLI SEEDLAANDILDYKDDDDKV
Tag:	C-Myc/DDK
Purity:	> 80% as determined by SDS-PAGE and Coomassie blue staining
Concentration:	>0.05 µg/µL as determined by microplate BCA method
Labeling Method:	Labeled with [U- 13C6, 15N4]-L-Arginine and [U- 13C6, 15N2]-L-Lysine
Buffer:	25 mM Tris-HCl, 100 mM glycine, pH 7.3
Storage:	Store at -80°C. Avoid repeated freeze-thaw cycles.
Stability:	Stable for 3 months from receipt of products under proper storage and handling conditions.
RefSeq:	NP_689880
RefSeq Size:	3806
RefSeq ORF:	744
Synonyms:	C20orf147; dj694B14.3; HDHD4
Locus ID:	140838
UniProt ID:	Q8TBE9

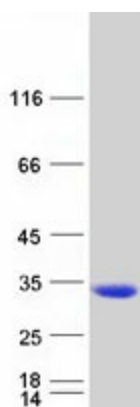


[View online »](#)

Cytogenetics: 20p11.21

Protein Pathways: Amino sugar and nucleotide sugar metabolism, Metabolic pathways

Product images:



Coomassie blue staining of purified NANP protein (Cat# [TP305503]). The protein was produced from HEK293T cells transfected with NANP cDNA clone (Cat# [RC205503]) using MegaTran 2.0 (Cat# [TT210002]).