

Product datasheet for PH305494

Non Neuronal Enolase (ENO1) (NM_001428) Human Mass Spec Standard

Product data:

Product Type:	Mass Spec Standards
Description:	ENO1 MS Standard C13 and N15-labeled recombinant protein (NP_001419)
Species:	Human
Expression Host:	HEK293
Expression cDNA Clone or AA Sequence:	RC205494
Predicted MW:	47.2 kDa
Protein Sequence:	>RC205494 protein sequence Red=Cloning site Green=Tags(s)

MSILKIHAREIFDSRGNPTVEVDLFTSKGLFRAAVPSGASTGIYEALELRDNDKTRYMGKGVSKAVEHIN
KTIAPALVSKKLVNTEQEKIDKLMIEMDGTENKSKFGANAILGVSLAVCKAGAVEKGVPLRHIADLAGN
SEVILPVPFNVINGGSHAGNKLAMQEFMILPVGAANFREMRIGAEVYHNLKNVIKEKYGKDATNVGDE
GGFAPNILENKEGLELLKTAIGKAGYTDKVVIGMDVAASEFFRSGKYDLDFKSPDDPSRYISPDQLADLY
KSFIKDYPVVSIEDPFDQDDWGAWQKFTASAGIQVVGDDLTVTNPKRIAKAVNEKSCNCLLLKVNQIGSV
TESLQACKLAQANGWGMVSHRSGETEDTFIADLVVGLCTGQIKTGAPCRSERLAKYNQLLRIEEELGSK
AKFAGRNRNPLAK

TRTRPLEQKLISEEDLAANDILDYKDDDDKV

Tag:	C-Myc/DDK
Purity:	> 80% as determined by SDS-PAGE and Coomassie blue staining
Concentration:	>0.05 µg/µL as determined by microplate BCA method
Labeling Method:	Labeled with [U- ¹³ C ₆ , ¹⁵ N ₄]-L-Arginine and [U- ¹³ C ₆ , ¹⁵ N ₂]-L-Lysine
Buffer:	25 mM Tris-HCl, 100 mM glycine, pH 7.3
Storage:	Store at -80°C. Avoid repeated freeze-thaw cycles.
Stability:	Stable for 3 months from receipt of products under proper storage and handling conditions.
RefSeq:	<u>NP_001419</u>
RefSeq Size:	2204
RefSeq ORF:	1302
Synonyms:	ENO1L1; HEL-S-17; MPB1; NNE; PPH



[View online »](#)

Locus ID: 2023

UniProt ID: [P06733](#), [A0A024R4F1](#)

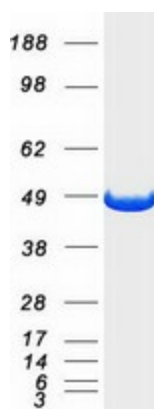
Cytogenetics: 1p36.23

Summary: This gene encodes alpha-enolase, one of three enolase isoenzymes found in mammals. Each isoenzyme is a homodimer composed of 2 alpha, 2 gamma, or 2 beta subunits, and functions as a glycolytic enzyme. Alpha-enolase in addition, functions as a structural lens protein (tau-crystallin) in the monomeric form. Alternative splicing of this gene results in a shorter isoform that has been shown to bind to the c-myc promoter and function as a tumor suppressor. Several pseudogenes have been identified, including one on the long arm of chromosome 1. Alpha-enolase has also been identified as an autoantigen in Hashimoto encephalopathy. [provided by RefSeq, Jan 2011]

Protein Families: Druggable Genome, Transcription Factors

Protein Pathways: Glycolysis / Gluconeogenesis, Metabolic pathways, RNA degradation

Product images:



Coomassie blue staining of purified ENO1 protein (Cat# [TP305494]). The protein was produced from HEK293T cells transfected with ENO1 cDNA clone (Cat# [RC205494]) using MegaTran 2.0 (Cat# [TT210002]).